

# Visual Story

Elise McCann

Relaxed Performance

Access resources developed in partnership with Scope Australia

**MELBOURNE  
RECITAL CENTRE**

# **Contents**

1. The Venue
2. The Musicians
3. The Repertoire
4. The Performance

# 1. The Venue



This event will be held at Melbourne Recital Centre. It is the building on the corner of Sturt Street and Southbank Boulevard in Southbank. Many people say it looks like a beehive.



Are you coming to Melbourne by train?  
Get off the train at Flinders Street Station. Go across St Kilda Road to the tram stop. Take a number 1 tram (going to South Melbourne Beach).

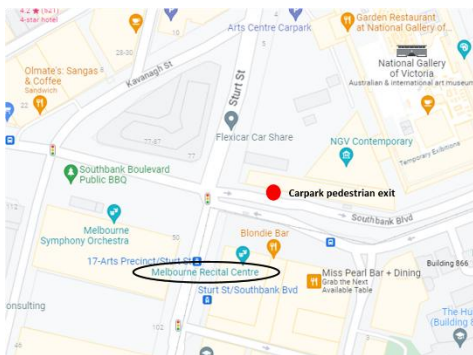


Get off the tram at accessible stop 17, right next to Melbourne Recital Centre (corner Sturt Street and Southbank Boulevard).

# MELBOURNE RECITAL CENTRE



Are you coming to Melbourne by car? The best place to park is at the Arts Centre Melbourne Car Park at the top of Sturt Street. For more information about parking costs [click here](#).



Once you have found a park, exit the underground carpark at Southbank Blvd and cross the road to Melbourne Recital Centre.

# MELBOURNE RECITAL CENTRE

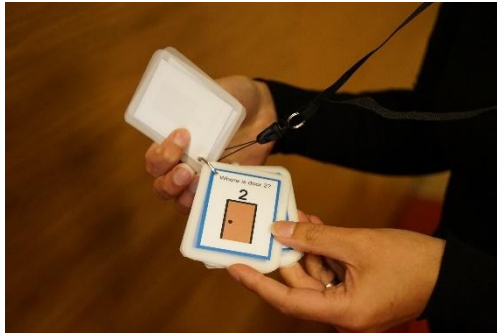


There is a main entrance to Melbourne Recital Centre on Southbank Boulevard.



Inside, the ground level foyer is partly carpeted, which makes it quieter. There is often music playing in the foyer through a speaker system.

Sometimes the foyer can be a busy and loud place depending on the number of people attending a concert.



If you have any questions whilst in the foyer, our Ushers carry picture cards with them. You can look through the picture cards and select the question you may want to ask. You can also print off the picture cards you want at home and bring them along with you. [Click here to see the picture cards.](#)



An important place in the foyer is the Box Office. Here you can collect or buy your ticket. The Box Office is open two hours before each performance. If you have access needs, please let us know when you're booking your tickets.



If you need help with asking questions at the Box Office, point to the sign in the photo.



Staff will show you a communication board to help. You can also [view](#) [or print out](#) this communication board before you arrive.

# MELBOURNE RECITAL CENTRE



This Relaxed Performance will be held in the Primrose Potter Salon, on the ground floor level of Melbourne Recital Centre.



There is just one door which leads into the Primrose Potter Salon from the foyer. You can sit anywhere you like in this venue.



To get into the Primrose Potter Salon, you have to go through a small room called the Sound Lock. This room is dark and keeps noise out of the concert venue.

# MELBOURNE RECITAL CENTRE



Before you enter the Sound Lock an usher will scan your ticket. The scanning machine will beep.



Please bring along the things that help to keep you comfortable and calm. You can bring ear plugs, earmuffs, visors or a stimulating toy.



Should you need them, you will find accessible toilets on each level of Melbourne Recital Centre. There are hand dryers in the accessible toilets that may make a loud noise.

## 2. The Musicians

This Relaxed Performance features Elise McCann, and includes:



- vocals

- piano



Actor, singer and producer, Elise McCann is most well-known for originating the role of 'Miss Honey' in the Australian production of Matilda, for which she won the 2016 Helpmann Award, the 2015 Sydney Theatre Award and was nominated for the 2016 Green Room Award; as 'Donna' in the 20th Anniversary production of MAMMA MIA! and as Rita Hansen in the Australian premiere of Groundhog Day the Musical, for which she received 2025 Green Room Best Performance in a Musical and Time Out Arts & Culture Best Performance in a Musical Award nominations. Most recently Elise has been seen starring as Barbara Maitland in Beetlejuice the Musical alongside composer Eddie Perfect!

## 3. The Repertoire



The Australian Beetlejuice cast, featuring Elise (second from right)

The first song in this concert is called *'Ready, Set, Not Yet'* from Beetlejuice the Musical, written by Eddie Perfect. This is a song about taking chances and how hard it is to be brave. The song captures that very human experience of desperately wanting to take a big leap in life, while finding every possible reason not to. The song builds with bright, bouncy energy throughout, and ends with a comic twist.



The soundtrack for the Last Five Years movie musical

Up next in the concert is a song called *'I Can Do Better Than That'* from a musical called The Last Five Years by Jason Robert Brown. It is a spirited, optimistic song sung by a young woman dreaming of a bigger, bolder life than what she has, or what she grew up watching. The energy rises joyfully toward the end - it is the sound of someone falling in love with the future.



Elise playing Miss Honey on stage

The third song in this concert is from *Matilda the Musical* by Tim Minchin. It's called '*My House*'. This is a beautiful and emotional ballad sung by Miss Honey - a woman who, after years of hardship and loneliness, has found her own small place of safety and freedom. The melody has a gentle, rocking quality. This song is very special to Elise as she originated the role of Miss Honey in *Matilda* and singing this song was the first big solo she got to perform in a commercial Musical.



Elise playing Rita on stage

The next piece was written by the same composer but is from *Groundhog Day the Musical*. The song, '*One Day*', is a witty, fast paced song with lots of lyrics. It is sung by the character Rita - who is a smart, self-aware woman reflecting on all the fairy-tale clichés and romantic expectations she was handed growing up. It moves from playful and conversational into something more open-hearted by the end. This song also holds a special place in Elise's heart, having played Rita and meeting her 'prince' in the Australian premiere season of this show in Melbourne.



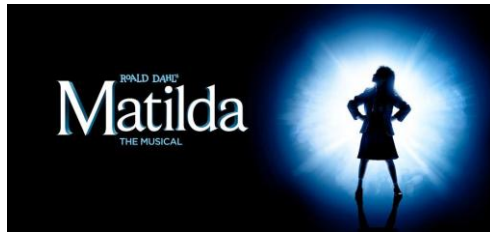
A scene from the movie musical  
Mamma Mia



A poster for Merrily We Roll Along

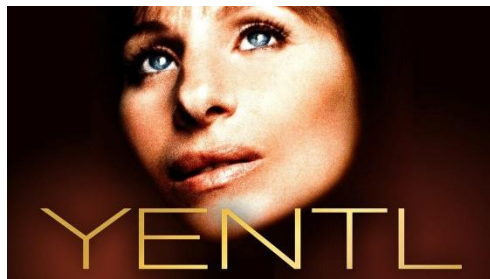
The fifth song in the show is called '*Slipping Through My Fingers*' from Mamma Mia, written by Benny Andersson and Björn Ulvaeus. This ABBA classic is a mother's tender reflection on watching her daughter grow up too fast. It is soft, bittersweet, and deeply nostalgic. It moves gently from beginning to end, with no sudden changes in energy.

'*Growing Up*' from Merrily We Roll Along is the sixth song in this concert. It was written by Stephen Sondheim. It is gentle and unhurried throughout, with no sudden shifts in energy. It sits with the big questions of life - who we become, and what we pass on. It is normally sung by the character Frank and is a tender, philosophical, and full of love look at the journey of life.



Poster for Matilda the Musical

The next piece is called 'Naughty' and is another song from Matilda the Musical by Tim Minchin. It is about standing up for what you think is right! And having the resilience and determination to take control of your own destiny - encouraging anyone who feels small or overlooked not to be afraid to challenge unfair situations. The song is bright, cheeky, and charming, with a driving rhythmic energy that builds to a triumphant finish.



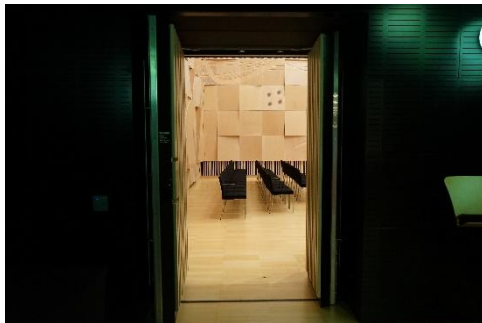
A Yentl movie poster with Barbara Streisand

The last piece in this concert is called '*Papa can you hear me/A Piece of Sky*' by Michel Legrand and Alan and Marilyn Bergman. It comes from the film Yentl, which tells the story of a young woman who defies all expectations to follow her dreams. Elise sung it in the Barbara Streisand concert with the Melbourne Symphony Orchestra and it has remained a favourite for years. The tempo and music moves from gentle and quiet and prayer like into very excited and climactic. It is very big and full-voiced at the end.

## 4. The Performance



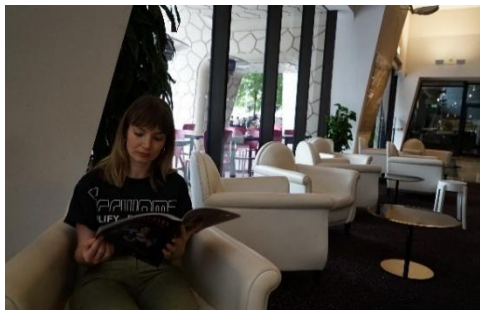
This Relaxed Performance will run for 45 minutes. There will be no interval. The house lights will remain on in the Primrose Potter Salon.



Doors to the Primrose Potter Salon will remain open for the duration of the performance.



The seating plan will include clear exit paths, more aisles and cushions on the floor.



A quiet space will be created in the ground level foyer for those who need a break.



The staff at Melbourne Recital Centre are looking forward to sharing music with you. We want you to enjoy every moment of your time with us. Please ask us if you need help or any other information.