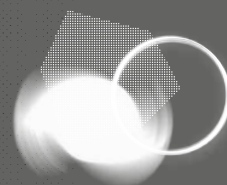


A n n u a l
R e p o r t

The Best Place to Hear

2 0 1 4 - 1 5
P a r t O n e



MELBOURNE
RECITAL
CENTRE

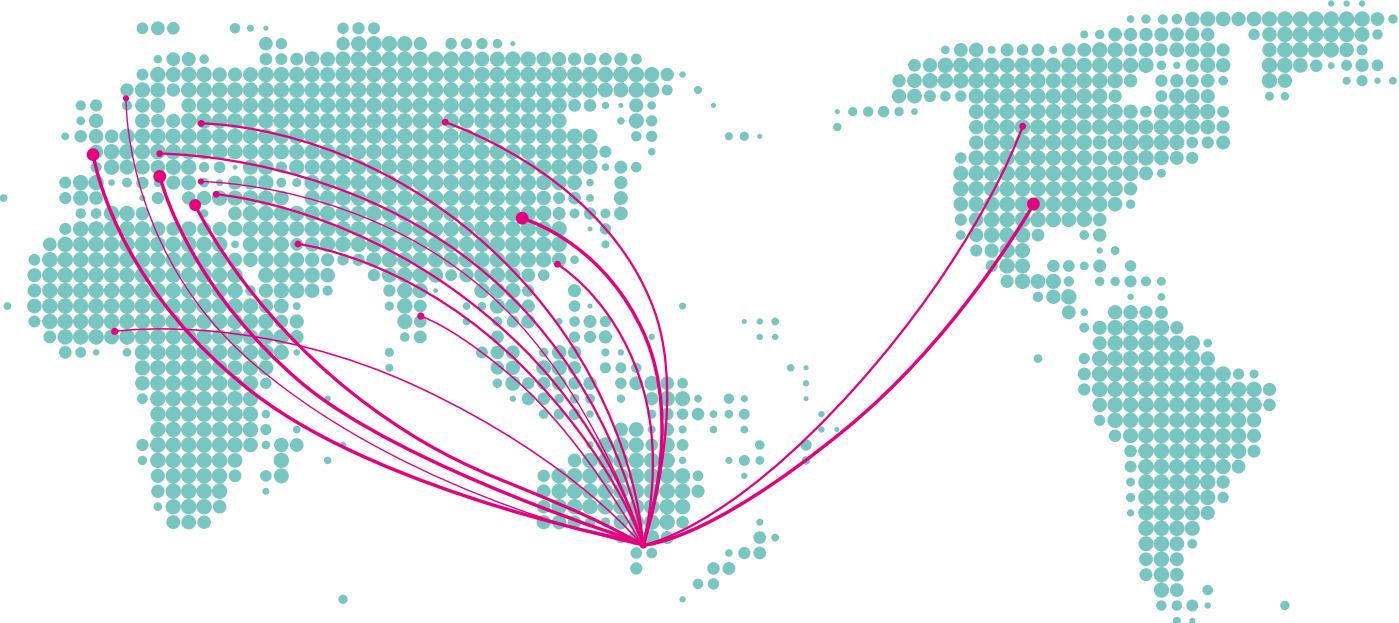
Contents

06	Key Achievements
08	Chair's Message
10	Report from the Chief Executive Officer
12	Program Highlights
16	Our Presenting Partners and Associates
17	Australian and World Premieres
20	Strategic Framework - Our Charter
22	SummerSalt Outdoor Arts Festival
26	Our Business Partners and Key Donors
27	Our Partners
28	Inspired Giving
32	Our People
37	Environmental Performance
39	Financial Summary
40	Statement of Corporate Governance

Owen Pallett
In Dreams: David Lynch Revisited, March 2015
Photo: Jeremy Christopher Bray

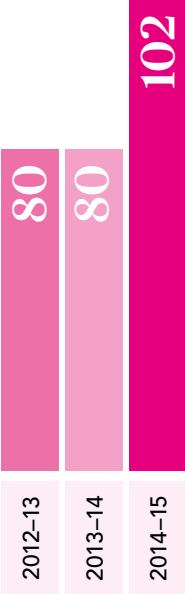
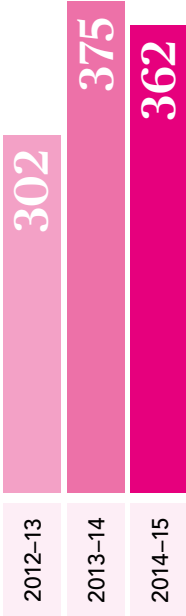


At the Heart of a Global Community of Musicians



Australian Ensembles

International Ensembles





J Mascis, February 2015 | Photo: Emily Day

Number of Events



'The performance of The Arrival was wonderful. Am a great fan of Shaun Tan and have now become one also of Orkestra of The Underground. The venue is a delight, really good warm vibe - shall be back for more.'

Audience member

Ben Walsh, Shaun Tan's *The Arrival* | Photo: Jeremy Christopher Bray



Key Achievements: Report Against Output Targets

Melbourne Recital Centre holds in trust one of the world's best spaces for the enjoyment of live music, and celebrates that role with a distinctive program of concerts, events and activities in many forms and genres. We envisage a future where music is at the heart of an inspired global community of musicians and audiences and that the Centre inspires creativity, self-expression, learning and enrichment through music for people of all walks of life.

	2013/14	2014/15	2014/15
	Results	Target	Results
Expansive and distinctive programs and audience			
Number of public events	511	500	524
Number of educational and children's programs	95	95	104
Total attendances*	184,243	145,000	165,540 ^a
Participation by students*	12,029	12,000	13,256
Broadcast audience per broadcast	250,000	250,000	250,000
Website - unique site visitors*	511,934	380,000	615,851 ^b
To build our financial and service capacities			
End of Year financial result	30,405	16,988	263,636
Total revenue	11,104,531	10,859,967	13,056,773
Development revenue	1,154,892	1,028,000	1,400,000
To deliver stakeholder value			
Visitor satisfaction*	96%	92%	98%
Community Engagement			
Melbourne Recital Centre Members*	343	400	672
Volunteer hours*	819	400	350 ^c
To aspire to creative leadership, with emphasis on the Australian voice			
Number of Australian artist/ensemble performances	375	350	362
To build Melbourne Recital Centre's position in the international context			
Number of international artist/ensemble performances	80	80	102

* Portfolio Agencies Output - 2014/15 State Budget Paper No. 3

a. Including SummerSalt, combined total attendance 2014/15: 328,463

b. Including SummerSalt, combined total website visitation 2014/15: 754,378

c. Including SummerSalt, combined total volunteer hours: 4,733

Storm Large & Le Bonheur
American Songbook Festival, June 2015
Photo: Jeremy Christopher Bray



Kathryn Fagg



Chair's Message

Chair's Message



Barbara Blackman donates Charles Blackman's *Fifty Flowers*.

From rock bands to string quartets, Great Performers to Baroque opera, there was more to see, hear and do at Melbourne Recital Centre last year than ever before. In 2014/15 the Centre hosted 524 events - the most ever - attracting a total audience of 165,540 for events in the Salon and Elisabeth Murdoch Hall. The Centre itself presented 340 events - a new record - and delighted over 68,000 music-lovers with a diverse and vibrant program that is unique in Australia. 184 events were presented by our hirers and Key Presenting Partners who are a vital part of our business and of Melbourne's creative ecosystem.

The Centre is delighted to be the home of so many fine groups, both national and Victorian, who present a diversity of superb events which are enjoyed by 97,000 concert-goers each year. Their essential contribution to our activities makes Melbourne Recital Centre's concert calendar a truly comprehensive representation of the best of Australia's musical landscape.

A particular pleasure for me has been the 2015 Local Heroes chamber music program presented by Melbourne Recital Centre in collaboration with 31 brilliant ensembles. To mark the ANZAC Centenary, Local Heroes incorporated personal histories of Victorians involved in World War I. The program has been a moving exploration in music and words of their strength and determination.

In 2014/15 over 162,000 Victorians and guests from around Australia and the world attended the SummerSalt Outdoor Arts Festival, which took over the Melbourne Arts Precinct in January and February 2015. SummerSalt was an initiative of Melbourne Recital Centre, which saw an unprecedented level of collaboration between organisations in the precinct to activate the neighbourhood during the buzzy summer months. Supported by the State Government of Victoria through Creative Victoria and a host of corporate sponsors and philanthropists, SummerSalt encompassed 281 free and low-cost events. An estimated 40 per cent of attendees were families and it was inspiring to see so many people of all ages engaging with artists and the precinct's world-class organisations; for 14 per cent of attendees it was their first time in the precinct. We believe that the Festival demonstrated the viability of new ways to showcase Melbourne's creativity, diversity and cultural riches. On behalf of Melbourne Recital Centre, the 15 partner organisations, the 740 artists, the volunteers and staff, I thank the people of Victoria for embracing SummerSalt. Thanks also to Creative Victoria, the then Minister for the Arts, The Hon Heidi Victoria MP, and current Minister for Creative Industries, Martin Foley MP, for providing the \$1.1 million in core funding that enabled the Centre to bring SummerSalt to life.

Sharing the music with those who for many reasons find it difficult to attend the Centre has become an increasingly important part of the Centre's strategy.

Share the Music, a ticketing subsidy program that brings people to performances at the Centre, allowed 1,277 adults and children to experience these concerts and educational enrichment events.

Share More Music takes music into the community, particularly through in-residence programs at aged care centres, where it provides the stimulation and joy that has been demonstrated to increase wellbeing. This life-enhancing program is supported by The William Buckland Foundation and the generosity of many other donors.

In mid-2014 the Centre was fortunate to receive a remarkable early birthday present from Barbara Blackman: a painting titled *Fifty Flowers* by her former husband Charles Blackman. This exquisite canvas, itself a gift from Charles to Barbara, depicts a colourful spray of flowers and a cat. At Barbara's request, the painting hangs in the artists' Green Room, a bouquet for every performer at the Centre to enjoy. On behalf of those performers, my heartfelt thanks for this generous and touching gift.

I would like to thank my colleagues on the Melbourne Recital Centre Board of Directors who give their time and expertise in support of the Centre's aspirations. I acknowledge in particular retiring Directors John Higgs OAM and Des Clark, who brought a unique perspective and insight to the Board. Both were very engaged Board members and John Higgs OAM chaired the Development and Governance Audit and Risk Committees for many years. I'm delighted to welcome Eda Ritchie AM and Paul Donnelly to the Board and the Directors and Management look forward to working with them both next year and beyond.

Melbourne Recital Centre extends its gratitude to the State Government of Victoria and Minister for Creative Industries Martin Foley MP for enabling us to open the doors to the Centre to all Victorians. Thanks also to Creative Victoria under the leadership of Andrew Abbott for their tireless support of the Centre and Victoria's artists and cultural institutions.

My personal thanks to CEO Mary Vallentine AO, who has led the organisation to a very successful artistic and financial result, and to the Executive Team and staff who brought the Centre's diverse, unique and superb programs to a record number of music-lovers. Concert-goers are at the heart of what we do here, and the Centre couldn't exist without them: on behalf of the musicians, the staff and Board of Melbourne Recital Centre, thank you.



Kathryn Fagg
Chair, Melbourne Recital Centre

Report from the Chief Executive Officer



Mary Vallentine AO

Melbourne Recital Centre's performances usually take place within the confines of its two venues. In 2014/15 the Centre's unique program spilled out into the streets of Southbank as part of the SummerSalt Outdoor Arts Festival, 23 January - 21 February 2015. The four-week festival, encompassing the precinct's arts organisations, the University of Melbourne and hundreds of independent artists and small to medium companies, delighted new audiences, winning new fans of the precinct's companies. SummerSalt also spoke to those who are already engaged with the arts, and provided new ways for them to interact and explore. The Centre raised \$505,000 in sponsorship and philanthropic support to supplement the generous Government grant of \$1.1 million. Media, tourism and transport sponsors provided in-kind support of \$180,000.



Lake Street Drive, Summersalt, February 2015 | Photo: David Harris

While the long-term impact of SummerSalt on the precinct is yet to be seen, the Festival was a highly visible and interactive event that fostered community engagement on a large scale. Many people visited the precinct twice to experience more of SummerSalt.

The economic impact on Victoria is estimated at \$930,000, and the Festival timeframe overlapped the Australian Open Tennis, the Asian Cup Soccer and the Cricket World Cup as an artistic complement to Melbourne's reputation as a summer sporting destination. Visitors to SummerSalt spent an estimated \$3.7 million in the Melbourne Arts Precinct over the duration of the Festival. As evidenced by the number of photos on Instagram and the overwhelmingly positive response to visitor surveys, Melbournians and our guests had a wonderful time exploring, among other fine offerings, the inflatable structure *Exxopolis* by Architects of Air and posing with the giant *Creature Features*, which took over several Southbank buildings.

Throughout 2014/15 the Centre continued to develop its distinctive program of concerts, lifelong learning activities and events to enhance the enjoyment and understanding of music. Inspiring creativity through profound and engaging musical experiences is at the heart of our mission and in 2014/15 we began to extend these activities beyond the footprint of the Centre. In addition to our education and outreach activities such as Share More Music, we worked with Yarra Ranges Council to curate and facilitate Classical Tracks, the Yarra Ranges Fine Music Program, presented at five venues in the region. These included concerts by Local Heroes ensembles, Canadian pianist Angela Cheng and Markiyana Melnychenko, the winner of the 2014 Great Romantics Competition. We also established a partnership with the Mildura Arts Centre, with the inaugural recital by Great Performer Paavali Jumppanen. Through activities such as these within and beyond the venue, Melbourne Recital Centre is becoming an increasingly vital part of a thriving ecosystem of artists throughout Victoria.

Melbourne Recital Centre's own program continues to demonstrate the quality that has made the venue a beacon to audiences as the best place to hear Australia's most diverse range of music, with streams dedicated to jazz, chamber music, international recitals, cabaret, children's music, new music and contemporary pop and rock. The Centre's Signature Events, *Les Arts Florissants*, *The Sixteen*, *The Four Seasons Recomposed* and *In Dreams: David Lynch Revisited*, position us at the vanguard of music presenters in the world. In July 2015, *Les Arts Florissants* and *Le Jardin des Voix: Un jardin à l'Italienne* won the Helpmann Award for Best Instrumental/Chamber Performance and William Christie won the Helpmann for Best Individual Classical Performance. *The Sixteen* and Great Performer violinist Christian Tetzlaff were nominated awards.

The Centre's concerts generated 67,951 attendances, and a gross box office of \$2.8 million for Melbourne Recital Centre Presents events, an increase on the previous year's box office. This positive result, with income from our commercial operations, has delivered a surplus of \$263,636 including the value of the Charles Blackman painting presented by Barbara Blackman. The Centre's endowment has grown to \$6 million, thanks to donations and sponsorship of \$1.4 million.

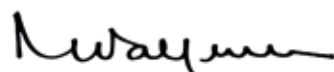
From master classes to competitions, the Centre's Artist and Development Program has provided opportunities to educate and challenge young musicians. In 2014/15 the Centre established ACCELERANDO, a fellowship for gifted secondary students, which supports their talents through extension activities such as workshops and concerts.

The Centre facilitates master classes presented by our Great Performer recitalists, offering a unique chance for young musicians to learn from the best in the world. Annual Bach and Great Romantics competitions are opportunities for very young instrumentalists to perform on stage in Elisabeth Murdoch Hall, a sometimes daunting experience that is essential to the development of any musician. These activities are made possible by the more than 5,000 donors to the Centre each year. Thank you for your generosity.

The Centre's performance spaces are justly renowned for intimacy, clarity and warmth of the sound and the surroundings. Maintaining the venue at the highest possible standard is vital not only for the enjoyment of our audiences and musicians, but also to remain the preferred venue for our hirers and Key Presenting Partners. In 2014/15 the Centre upgraded the sound desk, an essential asset in enabling superb amplified performances, among other infrastructural improvements. The Centre's staff members are an even more important part of our success. On a daily basis, from the technical team to the ushers, everyone is focused on ensuring that each performance is perfect. I take this opportunity to recognise the special contribution made by Director of Programming and Presenter Services Kirsten Siddle, who left the Centre in May 2015. During her tenure as Director, Kirsten defined the Centre's programming vision: eclectic, innovative, engaging, and of the highest standard. Kirsten was also the dynamic driving force behind SummerSalt; the successful delivery of this is an enormous achievement, and I thank her for her dedication, drive and imagination. The Centre welcomes Marshall McGuire, Head of Artistic Planning, and Greg Diamantis, Director of Production and Presenter Services, to continue to grow our reputation for excellence.

My personal thanks to all the staff of Melbourne Recital Centre; it is their passion, skill and dedication that make the Centre a remarkable place. My personal thanks to the Board of Directors and Chair Kathryn Fagg for generously giving their time, knowledge and support to the Centre. I thank the Executive Directors for their commitment, care and energy which allowed the Centre to flourish in 2014/15 inside and outside, presenting both the venue's busiest year of activities yet and a four-week arts festival.

The Centre thrives because of the inspiring talent and passion of our community of thousands of musicians, dozens of arts organisations and presenters, and importantly the music-lovers who join us at each performance. I extend to all of you sincere thanks from everyone at Melbourne Recital Centre.



Mary Vallentine AO

Chief Executive Officer, Melbourne Recital Centre

Program Highlights



William Christie, musical director/founder,
Les Arts Florissants, March 2015



Max Richter, *The Four Seasons: Recomposed*, November 2014

**'Impeccable performances
packed with bravado.'**

Les Arts Florissants, The Age, March 2015

This year, Melbourne Recital Centre was the best place to encounter music to surprise, challenge, entertain and move by artists from across the globe. In 2014/15 the Centre hosted 524 events, 340 of which were presented by Melbourne Recital Centre. The Centre's own presentations attracted an audience of 67,951 for both free and ticketed events.

Signature Events

The Centre's reputation for the excellence of its facilities and its programming continues to grow internationally. Crucial to this positioning are the Signature Events that showcase the Centre as a place for dynamic and exciting music-making in a space engineered for the best experience for audience and performer.

In March 2015 we were honoured to present French period instrument orchestra Les Arts Florissants conducted by William Christie with a cast of singers from Le Jardin des Voix, a training academy for young vocalists. The Centre partnered with the Perth International Arts Festival and Sydney Opera House to bring the orchestra to Australia for the first time in 15 years. As the five-star review in *The Age* said, "It doesn't get any better" as the Les Arts Florissants and singers performed a semi-staged assortment of treasures from Italian opera. In July 2015, the orchestra and William Christie each received Helpmann Awards for these performances.

Performances by English vocal ensemble, The Sixteen, are transporting experiences. We were delighted to welcome them back to perform a cappella masterpieces from the Renaissance to the present, including Allegri's *Miserere*. The Centre has developed a large audience for choral music through the regular programming of fine choral ensembles.

Max Richter's *The Four Seasons: Recomposed* bridged the 18th and 21st centuries, blending electronics and string orchestra in a beguiling arrangement of Vivaldi's *Four Seasons*. The Centre presented an authoritative reading of Richter's acclaimed 'recomposition', with the composer driving laptops and sequencers with the Wordless Music Orchestra and violinist Yuki Numata.

Celebrating the musical world of the iconoclastic auteur, *In Dreams: David Lynch Revisited* brought Mick Harvey, Owen Pallett, Sophia Brous, Cibo Matto and Camille O'Sullivan together under the musical direction of David Coulter to evoke the edgily beautiful soundscapes of *Blue Velvet*, *Lost Highway*, *Twin Peaks* and others.

Metropolis New Music Festival

Our annual collaboration with the Melbourne Symphony Orchestra, the Metropolis New Music Festival, this year showcased works written for, and inspired by, the moving image. Immersive and captivating, the Festival's stimulating and accessible program transported audiences with ground-breaking compositions. Multi-disciplinary ensemble Forest Collective united with local artists Rubik's Collective to present two world premieres. The MSO presented the Australian premiere of Jonny Greenwood's *There Will Be Blood* suite from the Academy Award-winning film which drew an audience of almost 1,000 people. In total, the Festival presented six world premieres and five Australian premieres.

Great Performers

Our flagship international recital series Great Performers is a powerful demonstration of the skills of a global roster of charismatic musicians in partnership with the Elisabeth Murdoch Hall's acoustic and visual splendours. The young piano duo of Alice Sara Ott (Germany) and Francesco Tristano (Luxembourg), solo cellist Alisa Weilerstein (USA), pianists Nicolas Hodges (UK) and Jean-Efflam Bavouzet (France) astonished audiences with their virtuosity and passion in 2014. The 2015 Season has seen violinist Christian Tetzlaff's (Germany) powerful solo recital, pianists Louis Lortie (Canada), Paavali Jumppanen (Finland) and Nikolai Demidenko (Russia). In 2015 the Centre sold 25 per cent more Great Performers season ticket seats than in 2014.



Local Heroes, Flinders Quartet

'Violin stripped back is simply stunning.'

Christian Tetzlaff, The Age, February 2015



Christian Tetzlaff, February 2015

Local Heroes

Each calendar year audiences can experience over 70 chamber music concerts by Australia's premier musicians. In 2015, the fifth year of Local Heroes, the season commemorated the ANZAC Centenary by pairing each concert with the story of Victorian lives touched by World War I. The 80 stories of strength and courage have been shared online at melbournerecital.com.au/stories and by Local Heroes ensembles at their concerts. Local Heroes provides a platform for Victorian and Australian ensembles by subsidising the presentations costs, providing a guaranteed fee and marketing and publicity support.

American Songbook

Celebrating the exceptional song-writing and artistry that developed over the course of the 20th century, our American Songbook Festivals in 2014 and 2015 once again explored the glorious history of American popular song. They featured a brilliant line-up of Australian and international artists including pianist Simon Tedeschi, jazz vocalists Freda Payne, Hetty Kate and Mama Alto, singer-songwriter Amanda McBroom, and Motown superstar Mary Wilson of The Supremes. A particular thrill was singer Storm Large and her band Le Bonheur; she brought her dark and dazzling sensibility to the American Songbook in June 2015.

Program Highlights continued



Keb' Mo', March 2015 | Photo: Jeremy Christopher Bray

Contemporary

Establishing a reputation as one of Melbourne's most exciting places to hear the contemporary genres of rock, pop, roots and electronica, Melbourne Recital Centre presented the hottest emerging acts and revered eminences. Among them were elder statesmen of the blues, Richard Thompson and John Mayall, who played to capacity audiences while Joan Armatrading's searing soul-inflected rock raised the roof on Elisabeth Murdoch Hall. Singer-activists Angelique Kidjo and Mavis Staples gave joyous and inspiring performances, moving everyone with their messages and their music. Our annual collaboration with Melbourne Music Week presented electronica duo A Winged Victory for the Sullen in ethereal soundscapes. Brooklyn-based trio The Antlers' richly textured, expansive brand of rock found an ideal home in Elisabeth Murdoch Hall, as did the solo guitar and rough-hewn voice of J Mascis. Victorian indie-rock royalty Augie March played to their avid fans, and the bluesy swagger of American singer-songwriter Beth Hart rocked the hall. Rounding this eclectic line-up, ukulele superstar Jake Shimabukuro demonstrated the beauty of his underrated instrument and French gypsy-swing ensemble Paris Combo played to a sold-out hall with unforgettable joie de vivre.

Dedicated to exploring the genres of jazz and blues and their offspring - funk, soul, fusion and pop - our jazz stream Mood Indigo featured intimate club-style concerts from leading Australian groups and soloists like Red Fish Blue Fish, Andrea Keller and Gian Slater in the Salon and innovative improvising groups including The Necks in Elisabeth Murdoch Hall.

'The Necks shine in the pristine environment of the Melbourne Recital Centre.'

The Age, February 2015

World Music

Melbourne Recital Centre's classical and popular programs have a global outlook, but exploring the living musical traditions of other cultures is an opportunity to reflect on Melbourne's rich cultural diversity on stage.

The Centre focused on the classical traditions of India and China in 2015 with two outstanding presentations. In October 2014 the Centre and Melbourne Festival presented the Beijing-based Jun Tian Yun He Ensemble in an exquisite concert encompassing music for the ancient zither, the *guqin*, western instruments, Chinese opera and Tai Chi. In the Salon, the Ensemble created an other-worldly space where visitors could immerse themselves in the five ways of the *guqin*: tea, flower arranging, incense, calligraphy and music.

Our regular collaboration with Nataraj Cultural Centre, Australia's foremost presenter of Indian classical performers, brought violinist Dr Lakshminarayana Subramaniam and his son Ambi and vocalist Ashwini Bhide Deshpande to Elisabeth Murdoch Hall in November 2014 to celebrate the 50th Spirit of India concert since the program's inception 33 years ago. This was a magnificent concert for a significant milestone event.

'Fabulous and affordable experience in the Salon.'

Audience member



Share More Music, Emmy Monash Aged Care



Vivaldi Unwired, Australian Brandenburg Orchestra, May 2015

2014/15 Learning and Access

Share the Music, the Centre's ongoing ticket and transport subsidy scheme, fully supported the attendance of more than 1,200 adults and children from a range of schools and community organisations. In particular, students and school groups deepened their engagement with the Centre's music programs through participation in tailored learning opportunities, including backstage tours, meet the artist and Q&A sessions. Primary students developed their singing skills in dedicated Children's Week workshops. Families, children and schools explored the Centre to learn about acoustics and design elements, with custom resources for MusicPlay and Education Week. The Centre's learning resources are available online for public dissemination at melbournerecital.com.au/learn.

Community engagement with 450 senior Victorians was achieved by the launch of Share More Music 'in-resi' programs, held at three facilities beyond the Centre. Ogham Soup celebrated St Patrick's Day with the residents of Multicultural Aged Care Services, Geelong. The elders and family members of Emmy Monash Aged Care, together with students from Wooranna Park Primary School, enjoyed interactive concerts performed by renowned a cappella ensemble, Coco's Lunch. Wesley St Mark's provided a host venue for concerts by Cosmo Cosmolino, and these concerts were attended by approximately 15 client groups of Wesley Mission Victoria.

Key Presenting Partners

Melbourne Recital Centre is also delighted to host six world-class classical music organisations who take up a yearly Melbourne residence in the inspiring surrounds of Elisabeth Murdoch Hall. As the Centre's Key Presenting Partners, the Australian Brandenburg Orchestra, Australian Chamber Orchestra, Australian String Quartet, Melbourne Chamber Orchestra, Melbourne Symphony Orchestra and Musica Viva Australia's contribution to Victoria's classical music scene is immense, bringing over 97,000 attendees to the Centre in the last 12 months. We always look forward to each of their visits and the opportunity to enjoy their superb music-making.

The Centre is pleased to have strong relationships with all our partners, including our close collaborations on our annual Mostly Mozart series with Orchestra Victoria, ANAM and the Metropolis New Music Festival with the Melbourne Symphony Orchestra. We hosted a number of events in the Melbourne Festival and Melbourne International Jazz Festival, and from presenters small and large, all of which make an invaluable contribution to the Centre's vibrancy and consolidate its leading position in Australian music-making.

Marshall McGuire
Head of Artistic Planning

Robert Murray
Director of Marketing
& Customer Relations

Our Presenting Partners and Associates

Acacia Quartet
Accademia Arcadia
Adam Simmons
Adelaide Chamber Singers
Albare Productions
Alex & Nilusha
Alma Mater
Amir Farid
Amitofo Care Centre
Andrea Keller
Andrew J Anderson
Andrew McKinnon Presentations
Anja & Zlatna
Anthony Romaniuk
Australia Northern Europe Liaisons
Australia Piano Quartet
Australian Art Orchestra
Australian Boys Choral Institute
Australian Brandenburg Orchestra
Australian Chamber Orchestra
Australian National Academy of Music
Australian String Quartet
Australian Youth Orchestra
Ben Opie & Peter de Jager
Benaud Trio
Borrowed Time Trio
BottledSnail Productions
Brad Cooper & David Barnard
Brighton Dance Academy
Chamber Music Australia
Chantal Mitvalsky
Chris Howlett
Consort of Melbourne
Continuo Collective
Cosmo Cosmolino
Creative Victoria
Daniel de Borah & Friends
David Bridie
David Jones
Donald & Isin
Down-Under Concert Direction
Duo Chamber Melange
The Emmerson-Lifschitz Duo
Ensemble Gombert
Ensemble Liaison
Ensemble Offspring
Firebird Trio
Flinders Quartet
Forest Collective
Frontier Touring
Frostfall
Grigoryan Brothers
The Harbour Agency
InConcert Music
Jenny M Thomas
Joe & Zoe
John Cristian Productions
John Griffiths
Josh Cohen School of Music
Julien Wilson Trio
The King David School
Kristian Chong and Friends
Kristin Berardi and James Sherlock
La Compania Australia
Latitude 37
The Leo & Mina Fink Fund
Lisa Moore
Live Nation Australasia
Loreto Mandeville Hall Toorak
Lowther Hall Anglican Grammar School
Ludovico's Band
Luke Howard
Manilla Street Productions
Manins and Gould
Melba Opera Trust
Melbourne Art Song Collective
Melbourne Chamber Orchestra
Melbourne City Council - Melbourne Music Week
Melbourne Girls Grammar
Melbourne Guitar Quartet
Melbourne International Festival of the Arts
Melbourne International Jazz Festival
Melbourne Symphony Orchestra
Melbourne Winds
Methodist Ladies College
Michael Johnson
Mogilevski Duo
Monash University Academy of Performing Arts
Monash University Sir Zelman Cowen School of Music
Monique diMattina
Murphy's Law
Musica Viva Australia
MusicBridge
Nataraj Cultural Centre
National Boys Choir of Australia
New Music Network
Nick Tsiavos
Opening Gambit Music
Opera Scholars Australia
Orchestra Victoria
Our Lady of Mercy College
Patma Music Family Concerts
Peter de Jager
Plexus
Press, Play
Quartz
RAZ Music
Red Fish Blue
Richard Bonyngne and Joan Sutherland Foundation
Royal Melbourne Hospital Foundation
Sacré Coeur
Seraphim Trio
Sky Dragon Performance Company
Skyhigh Promotions
The Song Company
Songmakers Australia
Sotto Voce Musi - The New Palm Court Orchestra
Speak Percussion
St Kilda Primary School
St Michael's Grammar School
Strathcona Baptist Girls Grammar
Streeton Trio
Sutherland Trio
Syzygy
Theatre Tours Australia
Things She Said
Timothy Stevens
Timothy Young and Giulio Plotino
Tinalley Quartet
Tombowler Presents
Trio Anima Mundi
The University of Melbourne
The University of Melbourne Orchestra
Victoria Welsh Choir
Victorian College of the Arts Secondary School
Victorian Curriculum & Assessment Authority
Victorian Opera
Wesley College
Westbourne Grammar School
Wilma and Friends
Zionist Council of Victoria
Zoe Knighton and Amir Farid
Zubin Kanga

Australian and World Premieres

COMPOSER	TITLE		DATE
Daniel Riley	<i>Songs of Aristophanes</i>	World premiere	20/07/2014
William Gardiner	<i>Little Room</i>	World premiere	15/08/2014
James Whitbourn	<i>Annelies</i>	Australian premiere	4/09/2014
Dermot Tutty	<i>Going Dark</i>	World premiere	15/09/2014
Gordon Kerry	<i>Making Signs</i>	World premiere	18/09/2014
Brett Dean	<i>And Once I Played Ophelia</i>	Australian premiere	Co-commissioned by the Australian String Quartet, Britten Sinfonia & the Santa Fe Chamber Music Festival 12/11/2014
Dermot Tutty	<i>Song to the Moon</i>	World premiere	12/11/2014
Roger Zare	<i>Telescopic Variations</i>	World premiere	Winning work of the 2014 Trio Anima Mundi Composition Prize 13/11/2014
Jack Symonds	<i>Hell is Murky</i>	World premiere	15/11/2014
Kat McGuffie	<i>String Quartet No.1</i> <i>Kreutzer sonata</i>	World premiere	18/11/2014
Julian Yu	<i>Mozartiana</i>	World premiere	19/11/2014
Peter De Jager	<i>Crystals II</i>	World premiere	4/12/2014
Richard Tognetti	<i>Mutant Mutations on the Queen of the Night Aria</i>	World premiere	10/12/2014
Ross Edwards	<i>Gallipoli</i>	World premiere	26/02/2015
Paul Dean	<i>New Song Cycle</i>	World premiere	3/03/2015
Nat Bartsch	<i>Into the Light</i>	World premiere	16/03/2015
Lisa Cheney	<i>No Distant Place</i>	World premiere	16/03/2015
Sally Greenaway	<i>Quietude</i>	World premiere	16/03/2015
Maria Grenfell	<i>Voyage</i>	World premiere	16/03/2015
Sally Whitwell	<i>The Web</i>	World premiere	16/03/2015
Kenji Fujimura	<i>Echoes of the Silver Screen</i>	World premiere	17/04/2015
Nicholas Buc	<i>St Mark's Scherzo</i>	World premiere	19/04/2015
Paul Grabowsky	<i>Aus Der Tiefe for piano solo</i>	World premiere	24/04/2015
Jeanette Little	<i>No Optic</i>	World premiere	4/05/2015
Peter De Jager	<i>Fractured Timelines</i>	World premiere	4/05/2015
Alexander Garsden	<i>Messages to Erice I & II</i>	World premiere	4/05/2015
Paul Dean	<i>New work</i>	World premiere	5/05/2015
Elanor Webber	<i>Texture of It</i>	World premiere	7/05/2015
Harry Sdraulig	<i>Kaleidoscope</i>	World premiere	9/05/2015
Nico Muhly	<i>Cello Concerto</i>	Australian premiere	9/05/2015
Julia Wolfe	<i>Fuel</i>	Australian premiere	13/05/2015
Jonny Greenwood	<i>There Will Be Blood: Suite</i>	Australian premiere	16/05/2015
Gordon Kerry	<i>Snow White & Other Grimm Tales</i>	Australian premiere	28/05/2015
Paul Grabowsky	<i>Ellipsis</i>	World premiere	10/06/2015



*'As I said to my companion on the night,
I practically live here! The sound is superb!'*

Audience member

Angélique Kidjo,
April 2015

*'Acoustics were beautiful, program
was spot on, conducting was superb,
orchestra was phenomenal, services
were top notch. Made me wonder why
we don't go more often.'*

Audience member



'Excellent artists, very good atmosphere, we left very uplifted.'

Audience member

Les Arts Florissants & Le Jardin des Voix, March 2015

'We love the Recital Centre! It's fantastic to be able to choose your visits and the ambience inside is lovely. Front row seats were amazing and the acoustics are flawless.'

Audience member



Les Arts Florissants & Le Jardin des Voix, March 2015

Strategic Framework - Our Charter

VISION

Melbourne Recital Centre is at the heart of an inspired global community of musicians and audiences.

MISSION

Melbourne Recital Centre inspires creativity, self-expression, learning and enrichment through music for people of all walks of life.

PURPOSE

Melbourne Recital Centre's objectives are the promotion of fine music through the presentation and commissioning of musical works, performances and programming, and the promotion of the Centre.

It is the custodian for the State-owned building and is responsible for planning and managing the operations of the Centre as a purpose-built venue and assists in raising funds to support the delivery of these objectives.

Melbourne Recital Centre will represent and promote the interests of music patrons, users and the music community of Victoria including the identification of relevant infrastructure needs and the appropriate future planning. It will present opportunities for nurturing emerging Australian creative and performing artists. Its forward programming strategy will be designed to attract audiences who reflect the broad geographic, economic, social and cultural diversity of Victoria, as well as interstate and international visitors.

ASPIRATIONS

1. **Recognised as one of the world's greatest music venues**
2. **Nurture and inspire our diverse audiences**
3. **Acclaimed and trusted for superb programs**
4. **Creative leader for artists, audiences and supporters**
5. **Securing the future of Melbourne Recital Centre**

KEY INITIATIVES AND PROJECTS: SUPPORTING OUR ASPIRATIONS

Recognised as one of the world's greatest music venues

As the finest acoustic space in Australia and one of the best worldwide, Melbourne Recital Centre will extend its reputation among musicians, ensembles and audiences both nationally and internationally as *The Best Place to Hear* as well as the best place to perform. The Centre's unique positioning as an excellent performance space for music of many genres sets it apart from many other music venues.

- This year the Centre hosted 102 concerts featuring international performers in classical, jazz and contemporary genres including acclaimed ensembles Les Arts Florissants (France), Jun Tien Yun He (China), The Sixteen (UK), singer Angelique Kidjo (Benin/France) and band The Antlers (USA)
- The Centre's exclusively music-focused and diverse program makes it unique in Australia.
- We have presented concerts developed at London's Barbican and a host of international performers who regularly perform at major venues in Europe, the Americas and Asia.
- Feedback from performers regularly praises our staff and the superb quality of the venue. The Centre has a growing reputation among international musicians, and high awareness and excellent reputation among Australian musicians.
- Our website received 615,851 visits, a 20 per cent increase year on year. Seven per cent of visits are from outside of Australia.

Nurture and inspire our diverse audiences

Engage the broadest audience to experience performances that reflect and extend their musical interests and provide a context to enrich the concert experience through pre-concert talks, printed programs, online resource materials, an iPhone app, concert streaming and music appreciation workshops. With a commitment to quality and diversity, Melbourne Recital Centre programs will range from the traditional to the contemporary, from early music through jazz to the very newest works performed by artists who specialise in their chosen field.

- We hosted 1,277 guests of Share the Music in 2014/15 through partnerships with 22 community organisations.
- We initiated activity beyond the Centre through a pilot program with the aged care sector and Centre-curated programs in Mildura (Paavali Jumppanen performance and master class) and a 10-concert series in cooperation with the Yarra Ranges Council.
- 98 per cent of customers are satisfied with their experiences at Melbourne Recital Centre.
- Events for families, students and adults in a wide range of musical styles have engaged a broad cross-section of music-lovers of all ages. 89 per cent of the Centre's audience lives in Melbourne with a further 8 per cent from other parts of Victoria and 3 per cent from interstate and overseas.
- On average the proportion of new to repeat customers purchasing through the Centre's box office is 50 per cent new and 50 per cent repeat.
- There are 672 Melbourne Recital Centre Members, a 95 per cent increase on the previous year.

- The number of subscribers in the Great Performers series grew 25 per cent year on last year; Local Heroes grew 29 per cent and Mostly Mozart series grew 55 per cent on the previous year.
- SummerSalt presented 281 accessible free or low-cost events outdoors in January and February; 216 of these were for children and families.

Acclaimed and trusted for superb programs

Melbourne Recital Centre's music program delivers a diverse range of music and genres which are recognised as relevant, expansive and distinctive. The Centre's programs reflect and extend the musical interests of people of all walks of life, and concerts are enriched by talks, program notes and other resources. We are committed to quality and diversity, and our programs range from the traditional to the contemporary.

- The Centre attracted 165,540 attendances for main-stage concerts and a further 162,923 for SummerSalt, a total of 328,463.
- The Centre presented or hosted 102 international ensembles in genres including jazz, rock, world music and classical.
- We had 13,256 students participate in or enjoy a performance at Melbourne Recital Centre, an increase of 10 per cent on the previous year.
- There were 104 educational or children's events at Melbourne Recital Centre.
- We hosted or presented 524 events in 2014/15, up from 511 in 2013/14.
- The Centre provides free programs for nearly all its concerts, preconcert talks at Great Performers and select Signature Events. The Centre presented four free Music on the Mind talks exploring music, the brain and psychology in collaboration with the University of Melbourne and two Musical Explorations music appreciation talks.

Creative leader for artists, audiences and supporters

We aspire to lead the community of presenters, venues and companies to ensure that audiences can experience the best and most stimulating music from different musical genres. We are committed to building an extensive community of corporate and philanthropic supporters whose mission and vision align with ours. In partnership with artists and ensembles, we wish to present leading Victorian artists, developing the Centre as the creative hub for music in Melbourne. We are also developing the market for fine music in Melbourne and Australia to ensure that the vibrant program finds an enthusiastic audience.

- We developed new initiatives to support gifted secondary school-age students through ACCELERANDO in partnership with the Department of Education & Training and The Sentinel Foundation and a new regional music award through the Bach Competition supported by Newsboys Foundation.
- SummerSalt Outdoor Arts Festival attracted over 162,000 people to Melbourne Arts Precinct, 14 per cent for the first time. The festival galvanised Government, sponsor and donor support, the participation of the precinct's arts organisations and hundreds of artists in the small to medium sector.
- SummerSalt engaged 740 artists at 281 events.
- The Centre presented or hosted 362 performances featuring Australian artists.

Securing the future of Melbourne Recital Centre

As the custodians of this magnificent building, Melbourne Recital Centre will oversee its management and ensure that operations are effectively managed. We will continue to attract and nurture partnerships and philanthropic support to enable the delivery of our objectives, aspirations and priorities.

- Income from philanthropy and corporate sponsorship (excluding SummerSalt) increased by 20 per cent compared to the previous year and now represents 14 per cent of the Centre's total income.
- Over 5,000 donations were made to the Centre in 2014/15, up from over 3,000 the previous year.
- The Centre itself presents over 60 per cent of the concerts and events taking place at the Centre each year. This investment in a vibrant music scene for Victoria is supported entirely by ticket sales, philanthropy and sponsorship.
- We expanded our HR function including a dedicated resource to best meet the needs of our growing activities.
- In collaboration with Creative Victoria, Melbourne Recital Centre finalised the 10-year asset strategy and asset management plan to assist in ongoing management and oversight of the building and its assets.
- The Centre's Public Fund grew to \$6 million.

SummerSalt Outdoor Arts Festival

The energy and creativity of Melbourne's Arts Precinct burst onto the streets in 2015 with the inaugural SummerSalt Outdoor Arts Festival - a four-week collaborative festival that transformed under-utilised outdoor spaces in Southbank with a mix of free and ticketed arts activities.

From Friday 23 January to Saturday 21 February 2015, the Arts Precinct was brought to life with an array of music, dance, theatre, circus, and experiential events, with a focus on free and family programming.

With festival leader Melbourne Recital Centre as curatorial overseer, SummerSalt was a collaboration of major performing arts organisations including the Australian Broadcasting Corporation, Australian Centre for Contemporary Art, Arts Centre Melbourne, The Australian Ballet, Chunky Move, Federation Square, Malthouse Theatre, Melbourne Symphony Orchestra, Melbourne Theatre Company, National Gallery of Victoria, Opera Australia, The University of Melbourne's Conservatorium of Music and Victorian College of the Arts.

These organisations were joined by 75 small to medium independent companies from the creative sector, who together, delivered a program of 281 events across 30 days, performed by 740 artists in 26 locations. Audience attendance figures soared past initial expectations with over 162,000 visitors attending both free and ticketed events at the festival.

SummerSalt's most popular attraction was *Exxopolis* by Architects of Air, a fantastical labyrinth of colour and light set in a monumental inflatable dome on the forecourt of Australian Centre for Contemporary Art (ACCA). This event captured the hearts and imaginations of children and adults alike, selling 9,200 tickets over 10 days.

Onlookers were similarly surprised and delighted by the *Creature Features* - four inflatable works of irreverent art that disrupted normal city views, challenging and encouraging us to look at the world from a new perspective.

Music highlights included international bands Kid Congo & the Pink Monkey Birds, Peter Hook + The Light and Lake Street Dive - all performed at the enigmatic outdoor garden venue Testing Grounds.

The interactive digital adventure game *Sour Times* offered audiences a national first, combining real-world clues with GPS location services and relying on the participants' smartphones to solve clues. Using an app designed by Sandpit and supported by Telstra, players were led on a scavenger hunt across the Arts Precinct as they followed the misadventures of three different characters and discovered surprising locations.

Other major highlights included the raucous circus troupe Scotch + Soda, the high-octane aerial dance and interactive projection work *Pixel Mountain*, Arts Centre Melbourne's monumental *Home* project, a dog park with a difference in *Farnsworth's Republic for Dogs*, the world's largest human puppet *Everybody*, and a swag of other theatre, music, dance and experiential art pieces.

SummerSalt's central mission was to invigorate the Melbourne Arts Precinct with accessible arts for all, enhancing Melbourne's reputation as a sophisticated, vibrant, global city for visitors during summer. The festival came to life after recommendations made in the Melbourne Arts Precinct Blueprint, released in February 2014, called for greater collaboration between the organisations that called the area home.



Gong Garden, Festival Hub, SummerSalt | Photo: David Harris



Creature Features, Lady Leviathan, Hamer Hall, SummerSalt | Photo: David Harris

‘The Melbourne Arts Precinct Blueprint is a vision for the future of the area. It recommended that revitalising the precinct was about bringing artists and institutions together to create projects and programs that enliven the streets and take the arts to new and diverse audiences.’

Former Minister for the Arts The Hon Heidi Victoria MP

SummerSalt was a pioneering festival in many respects, from its unprecedented level of partnership to its exclusively outdoor setting. Audiences witnessed a cross-pollination of arts companies and experienced exciting cultural mash-ups taking place in surprising and rarely inhabited locations around the precinct.

SummerSalt would not have been possible without the support of the Victorian Government, the many partners and artists who helped us shape such a vibrant program, and of course all of our patrons and visitors.



Scotch + Soda, Festival Hub, SummerSalt
Photo: Aaron Walker



Pixel Mountain, Festival Hub, SummerSalt | Photo: Aaron Walker

SummerSalt Outdoor Arts Festival Partners

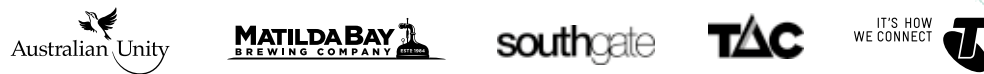
Principal Government Partner



Public Partners



Event Partners



Media and Tourism Partners



Corporate and Philanthropic Partners



Arts Partners



Festival Hub, SummerSalt
Photo: David Harris



SummerSalt Outdoor Arts Festival Summary of Results

Measure	Result
Number of SummerSalt events	281
Number of performances for children	216
Total attendances	162,923
Percentage of children and family participants	40%
Website - unique site visitors	138,527
Volunteer hours	4,383
Number of performers	740
Economic impact on Victoria	\$930,000 (estimate)
Expenditure by SummerSalt visitors in Arts Precinct	\$3.7M (estimate)

Our Business Partners and Key Donors

Melbourne Recital Centre was more visible in the community than ever in 2014/15, bringing transformative, shared experiences of music to thousands of people who rarely have this opportunity. Philanthropic support from trusts and foundations enabled exciting pilot programs in partnership with the aged care sector and regional Victorian communities. Gifts from individuals made possible a suite of young artist development projects, learning and access programs and hundreds of performances by the world's and Australia's best musicians - a truly exciting feast of music-making driven by the commitment of over 5,000 donors.

New ways to give online, a thriving Leadership Circles support scheme and a Gala Dinner to benefit the Elisabeth Murdoch Creative Development Fund, along with significant grants from 13 trusts and foundations and wonderful corporate partners, provided opportunities for over 165,540 people to experience the Centre's music.

I would particularly like to acknowledge the longstanding philanthropic leadership of Annamila Pty Ltd and the Benefactors of the Leadership Circles - Betty Amsden AO, The John and Jennifer Brukner Foundation, Kathryn Fagg, Colin Golvan QC and Dr Deborah Golvan, The Lowy/Price Family in memory of John Price, Naomi Milgrom AO, Lady Marigold Southey AC and The Klein Family Foundation, whose exceptional generosity inspires so many and ensures the Centre's capacity to pursue its mission.

Annual development revenue continued to grow with income reaching \$1.4 million for the Centre's programs, an increase of 20 per cent and the Centre's endowment grew to \$6 million. With this growth came a number of exciting innovations.

The focus of our newly launched Legal Friends program on strengthening our capacity to present vocal music was boosted by participation in the Australian Government's superb Plus 1 matching gift program through Creative Partnerships Australia. A campaign carried out with the support of exceptional volunteer advocates saw new and increased gifts matched dollar for dollar and resulted in close to \$80,000 being raised. We were also delighted when The Hon Justice Michelle Gordon and The Hon Kenneth Hayne AC agreed to become inaugural patrons of the Legal Friends program.

Inspired by the possibilities associated with music and social change, a three-year grant from The William Buckland Foundation was boosted with new support from The Helen Macpherson Smith Trust and the Lord Mayor's Charitable Foundation.

This assistance funded a successful pilot with three partners from the aged care sector. Another new supporter, The Marian & E.H. Flack Trust helped the Centre create learning resources and a new LEARN section for our website, which is available to all.



Gala Dinner, February 2015 | Photo: Michael Christian

We also embarked on an exciting new partnership with the Victorian Department of Education and Training to provide a three-year mentoring program called ACCELERANDO for gifted music students from government secondary schools. This was further boosted by a grant from The Sentinel Foundation for a writing module as part of the program. Combined with master classes, competitions such as Bank of Melbourne's Melbourne Music Bank, the Bach and Great Romantics Competitions, music commissions and subsidised performance opportunities like the Spotlight Series, supported by The Robert Salzer Foundation, the Centre is committed to providing the practical support young artists need to establish viable music careers. Our support for young artists was capped off in June when the inaugural Newsboys Foundation Regional Music Award was presented to an aspiring secondary school music student from regional Victoria as part of the annual Bach Competition.

A heartfelt thank you to our corporate partners - Etihad Airways and Audi Centre Melbourne/Brighton, ABC Radio, Ashurst, City of Melbourne, ERD, The Langham, Montblanc and Nous Group, as well as new partner Hayball. They are at the heart of the diverse concert program that makes the Centre a vibrant place year round.

As the Centre looks ahead, bequests that build its Public Fund will be increasingly fundamental to sustaining its vibrant, ambitious artistic program that stimulates creativity, self-expression, learning and enrichment through music for people from all walks of life.

We are grateful for our outstanding community of supporters who enable the Centre and its music to reach further and impact more strongly on the lives of all Victorians.

Margaret Farren-Price
Chair, Development Advisory Committee

Our Partners

At 1 July 2014 - 30 June 2015

Thank you

Melbourne Recital Centre acknowledges the generous support of its business, philanthropic supporters and patrons.

Founding Patron

The Late Dame Elisabeth Murdoch AC DBE

Board Members

Kathryn Fagg, Chair
Peter Bartlett
Stephen Carpenter

Des Clark
Joseph Corponi
Paul Donnelly

Margaret Farren-Price
John Higgs OAM
Julie Kantor

Eda Ritchie AM

Founding Benefactors

The Kantor Family
The Calvert-Jones Family
Lyn Williams AM

Helen Macpherson Smith Trust
Robert Salzer Foundation
The Hugh Williamson Foundation

Principal Government Partner

**CREATIVE
VICTORIA**



Business Partners

International Airline Partner



Supporting Partners



Audi Centre Brighton | Audi Centre Melbourne



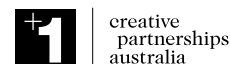
Design Branding Digital

nous group



AUDREY PAGE & ASSOCIATES

Program Partners



Foundations



THE MERLYN MYER FUND

THE HUGH WILLIAMSON FOUNDATION

THE MARIAN & E.H. FLACK TRUST



THE SENTINEL FOUNDATION

THE VIZARD FOUNDATION

2015 Gala Dinner Partners

Audi Centre Melbourne/Brighton
Australian Festival of Chamber Music
Etihad Airways
Le Bristol
Leading Hotels of the World
Les Arts Florissants
Levantine Hill

Mossgreen
Piper Hiedsieck
Bay Leaf Catering
Mrs Jennifer Brukner
Burch & Purchase Sweet Studio
Cruden Farm
Paul Dean & the Penny Quartet

Anna Goldsworthy
Angela Hewitt
Place Settings
Trasimeno Festival
Universal Music Australia
Victoria Whitelaw Beautiful Flowers

Inspired Giving

We thank the following patrons whose generosity ensures that the Centre can make a real difference in the lives of young artists and reach the broadest possible audience.

LEADERSHIP CIRCLES

The Leadership Circles comprise individual lead donors whose gifts of \$5,000 to \$25,000 support the Centre's eight program pillars.

Artist Development

Colin Golvan QC & Dr Deborah Golvan

Children's & Family

Betty Amsden AO
Mrs Margaret S Ross AM &
Dr Ian C Ross

Great Performers

The John & Jennifer
Bukner Foundation
Anonymous (2)
Brian & Esther Benjamin
Paulette & Warwick Bisley
Hans & Petra Henkell
Geoff & Jan Phillips
Lady Primrose Potter AC
Skipp Williamson & Carol Haynes

Lifelong Learning

Kathryn Fagg

Local Heroes

Lady Marigold Southey AC
The Klein Family Foundation
Andrew & Theresa Dyer
Jean Hedges
Dr Garry Joslin &
Prof Dimity Reed AM
Craig Reeves
Majlis Pty Ltd

Master Class

Price/Lowy Family in memory
of John Price
George & Laila Embelton

New Music

Peter Jopling AM QC
Naomi Milgrom AO

MUSIC CIRCLE PATRONS PROGRAM

Magnum Opus Circle (\$20,000+)

Yvonne von Hartel AM &
Robert Peck AM
Melbourne Recital Centre Board
of Directors
Kathryn Fagg
Peter & Cally Bartlett
Stephen Carpenter & Leigh Ellwood
Joseph Corponi

Paul Donnelly & Brigitte Treutenaere
Margaret Farren-Price &
Prof Ronald Farren-Price AM
Julie Kantor
Eda Ritchie AM

The Playking Foundation

Virtuoso Circle (\$10,000+)

J A Westacott & T M Shannon

Composers Circle (\$4000+)

Anonymous (2)
Andrea Goldsmith
Jenny & Peter Hordern
Alison & David Lansley
Maria Sola
Drs Victor & Karen Wayne
Lyn Williams AM
Melbourne Recital Centre
Senior Management
Message Consultants Australia Pty Ltd

Musicians Circle (\$2500+)

Eva Besen AO & Marc Besen AC
Robert & Jan Green
Diana Lempriere
James Ostroburski
Christine Sather
Susan Thacore
Kate & Stephen Shelmerdine
Family Foundation

Prelude Circle (\$1000+)

Anonymous (7)
Charles Baré
Adrienne Basser
Mary Beth Bauer
Helen Brack
Bill & Sandra Burdett
John & Thelma Castles
The Hon Alex Chernov AC QC &
Mrs Elizabeth Chernov
Maxine Cooper & Michael Wright
Kathy & George Deutsch
Mary Draper
Lord Francis Ebury &
Lady Suzanne Ebury
Maggie Edmond
The Late Lorraine Elliot AM
Susan Fallaw
The Leo & Mina Fink Fund
William J Forrest AM
Martin Ginnane & Ronnie Binding
Angela Glover
Jan Grant

Nance Grant AM MBE & Ian Harris
Sue Hamilton & Stuart Hamilton AO
Martin & Kristan Haskett
Penelope Hughes
Prof Andrea Hull AO
Darvell M Hutchinson AM
Stuart Jennings
Liane Kemp
Ann Lahore
David Marr & Sebastian Tesoriero
Norene Leslie McCormac
Maria Mercurio
Sarah & Baillieu Myer AC
Stephen Newton AO
Elizabeth O'Keefe
Helen L Perlen
Dr Robert Piaggio
Peter Rose & Christopher Menz
Rae Rothfield
Samara, Countess of Beekman
Robert & Jenni Stent
Barbara & Duncan Sutherland
Pamela Swansson
Elisabeth & Peter Turner
Sally Webster
Peter Weiss AO
Jacqueline Williams & Peter Murnane
Igor Zambelli
Youth Music Australia

Supporters (\$500+)

Peter J Armstrong
David Bardas
David & Rosemary Houseman
Judith Hoy
Gerry & Susan Moriarty
Kaye Salisbury & Bart Wissink

ENCORE BEQUEST PROGRAM

Providing sustained support for all aspects of the Centre's artistic program through its Public Fund.

Anonymous (2)
Betty Amsden AO
Jenny Anderson
Barbara Blackman
Ken Bullen
Jim Cousins AO & Libby Cousins
Dr Garry Joslin
The Estate of Beverley Shelton &
Martin Schönthal
Mary Vallentine AO

ELISABETH MURDOCH CREATIVE DEVELOPMENT FUND

Named after the Centre's Founding Patron, this Fund supports projects that make a difference to young artists and accessibility to music.

(\$20,000+)

Annamila Pty Ltd

(\$10,000+)

Betty Amsden AO

Naomi Milgrom AO

(\$4000+)

Anonymous (1)

Jennifer Brukner

The Late Harold Campbell-Pretty &
Krystyna Campbell-Pretty

Julian Burnside AO QC &
Kate Durham

Dr Alastair Jackson

Sally MacIndoe

Louise & Martyn Myer Foundation

Allan Myers AO QC & Maria Myers AO

Dr Cherilyn Tillman & Tam Vu

Andrew & Jan Wheeler

Janet Whiting AM & Phil Lukies

(\$2500+)

Dr Garry Joslin & Prof Dimity Reed AM

James Ostrobruski

Yvonne von Hartel AM &
Robert Peck AM

Lyn Williams AM

(\$1000+)

Anonymous (3)

Ashton Raggatt McDougall Architects

John & Mary Barlow

Adrienne Bassar

Jane Bloomfield

Barbara Burge

James Calvert-Jones

Sir Roderick Carnegie AC

Des & Irene Clark

Jim Cousins AO & Libby Cousins

George & Laila Embelton

Penny & Grant Fowler

Dr Jane Gilmour OAM

John Howie AM & Linsey Howie

Penelope Hughes

Penny Hutchinson

John Landy AC MBE & Lynne Landy

Christina McCallum &
Prof John Langford AM

Dr Richard Mills AM

Rowly & Judy Paterson

Prof David Penington AC &
Dr Sonay Penington

Geoff & Jan Phillips

Rob & Philippa Springall

Rob & Jenni Stent

Sally Webster

(\$500+)

Anonymous (1)

Peter & Cally Bartlett

Helen Brack

Brian & Esther Benjamin

The Hon Mary Delahunty

Kathryn Fagg

Margaret Farren-Price &
Prof Ronald Farren-Price AM

Colin Golvan QC & Dr Deborah Golvan

Robert & Jan Green

Peter & Barbara Kolliner

Peter & Susan Mahler

Eda Ritchie AM

Christine Rodan & Erskine Rodan OAM

Dr Peter Rogers & Cathy Rogers

Christine Sather

Drs Victor & Karen Wayne

Skipp Williamson & Carol Haynes

Message Consultants Australia

LEGAL FRIENDS OF MELBOURNE RECITAL CENTRE

Each year the group brings together music lovers from the legal profession to help fund one or more concerts by an artist appearing as part of the Centre's Great Performers Series.

Legal Friends Inaugural Patrons

The Hon Justice Michelle Gordon &
The Hon Kenneth M Hayne AC

(\$4000+)

Rachel & Hon Alan Goldberg AO QC

Naomi Golvan & George Golvan QC

The Hon Justice Michelle Gordon &
The Hon Kenneth M Hayne AC

Peter B Murdoch QC

(\$2500+)

Elizabeth O'Keeffe

Ralph & Ruth Renard

(\$1000+)

Anonymous (3)

Marcia & John K Arthur

Peter Bartlett

Ingrid Braun

Justice David Byrne QC

Christine Clough

Bruce Curl

Dr Gavan Griffith QC AO

Robert Heathcote & Meredith King

Judge Sara Hinchey & Tom Pikusa

Maryanne B Loughnan QC

Peter & Ruth McMullin

David O'Callaghan

Meredith Schilling

Michael Shand QC

(\$500+)

Colin Golvan QC & Dr Deborah Golvan

The Hon Chris Maxwell

SHARE THE MUSIC PROGRAM

This program enables disadvantaged children and adults to attend concerts by providing tickets and transport free of charge.

(\$10,000+)

Krystyna Campbell-Pretty

(\$4000+)

Anne Burgi & Kerin Carr

Wendy Kozica, David O'Callaghan &
Alan Kozica

(\$1000+)

Anonymous (2)

Caroline & Robert Clemente

Helen Imber

Dorothy Karpin

Christina McCallum &
Prof John Langford AM

Dennis & Fairlie Nassau

Kerryn Pratchett

Greg Shalit & Miriam Faine

Sirius Foundation

(\$500+)

Vivien & Jacob Fajgenbaum

Dr Robert Hetzel

George & Grace Kass

Maria Mercurio

Barry & Barbara Shying

Prof Richard Smallwood &
Carol Smallwood

Vivien Wertkin

'Undoubtedly for us Melbourne Recital Centre is one of our favourite venues around the globe.'

Borodin Quartet, October 2014



The King's Singers, American Songbook



David Helfgott



Mavis Staples



The Sixteen



The Antlers



Nicolas Hodges, Great Performers

'Absolutely wonderful hall, amazing staff,
beautiful city... What an experience.'

Fernando Guimarães, tenor, March 2015



Richard Tognetti

'Such a pleasure to play
in this spectacular hall.'

Paavali Jumppanen, piano, July 2014



Meeta Pandit, Spirit of India



Lah-Lah, MusicPlay



Blue Grassy Knoll



Benaud Trio, Local Heroes



The Callaway Sisters, American Songbook

Our People

Board of Directors



Kathryn Fagg



Peter Bartlett



Stephen Carpenter



Des Clark



Joseph Corponi



Paul Donnelly



Margaret Farren-Price



John Higgs OAM



Julie Kantor



Eda Ritchie AM

The Late Dame Elisabeth Murdoch AC DBE,
Founding Patron

Kathryn Fagg, Chair

Reappointed 22 April 2013

Member of the Board, Reserve Bank of Australia; Non - Executive Director of Boral Limited; Non-Executive Director of Incitec Pivot Limited; Non-Executive Director of Djerriwarrh Investments Limited; Non-Executive Director of the Breast Cancer Network of Australia; Former President FMCG Asia Pacific, Linfox; Former President, Asia, BlueScope Steel; Former Managing Director, Banking Products, ANZ; Former Chairman, Parks Victoria.

Peter Bartlett

Reappointed 22 June 2015

Partner Minter Ellison: Assistant Treasurer and Member Management Board and Council; Member Management Board International Bar Association and Liaison to its Asia Pacific Forum; Chair Advisory Board, Centre for Advancing Journalism, The University of Melbourne; Former Chairman Minter Ellison; Immediate Past President Barwon Heads Golf Club; Life Member Melbourne Press Club; Former Chair World Services Group; Former Member State Sports Centres Trust and State Sports & Aquatic Centre Trust.

Stephen Carpenter

Reappointed 22 June 2015

Partner, KPMG; Fellow, Taxation Institute of Australia; Member, Institute of Chartered Accountants; Foundation Board Member, Museum of Australian Democracy at Eureka (M.A.D.E).

Des Clark

Retired 22 June 2015

Board Member, Australian Centre for the Moving Image and Docklands Studios Melbourne; Former Director, Office of Film and Literature Classification; Former Deputy Chairman, Australian Film Commission; Former Chairman, Melbourne International Film Festival; Former Lord Mayor, City of Melbourne; Former Chairman of Commissioners, City of Port Phillip.

Joseph Corponi

Reappointed 22 June 2015

Former Director, Asylum Seekers Resources Centre; Former Director, Gould Group; Former Director, International Council of Museums (Australia).

Paul Donnelly

Appointed 22 June 2015

Executive Director Macquarie Capital Australia (Limited). Global Head of Equity Capital Markets Macquarie Bank; Global Head of Debt Capital Markets Macquarie Bank; Member of the Institute of Chartered Accountants in England and Wales; BSc (Hons) from the University of Southampton; Advanced Management Program at Harvard Business School.

Margaret Farren-Price

Reappointed 22 June 2015

Founder and Artistic Director, Impresaria Piano Series (1990-2011); Board Member, Piano Landmarks; Private piano studio.

John Higgs OAM

Retired 24 August 2014

Trustee, Bendigo Art Gallery Foundation; Chairman, Advisory Board, La Trobe Visual Arts Centre; Co-Founder and Founding Chair, Girton Grammar School; Former President, Bendigo Art Gallery; Former Member, Council of Bendigo College of Education; Former Member, Academic Staff, La Trobe University.

Julie Kantor

Reappointed 22 June 2015

Director, Annamila Pty Ltd; Director, Dara Foundation; Director, McClelland Gallery & Sculpture Park; Board Member, State Library of Victoria Foundation.

Eda Ritchie AM

Appointed 14 July 2014

Long-time community service leader in education, government and the arts; University of Melbourne Council Member; Chairman of Victorian College of the Arts Foundation; Trustee of the R E Ross Trust; Previously inaugural Chairman and Board member of Port Fairy Spring Music Festival; Board member of Melbourne University Publishing; Rural Finance Corporation; Howard Florey Institute; various government organisations involving natural resource management, health and local government.

Retiring Directors

Des Clark (22 June 2015)

John Higgs OAM (24 August 2014)

BOARD COMMITTEES

Governance, Audit and Risk Committee

Stephen Carpenter (from 23 April 2012)

Chair (from August 2014)

John Higgs OAM, Chair (from March 2011 to August 2014)

Joseph Corponi (from 23 April 2012)

Paul Donnelly (from 22 June 2015)

Kathryn Fagg (from September 2010)

Remuneration Committee

Kathryn Fagg, Chair (from April 2011)

Peter Bartlett (from June 2014)

Stephen Carpenter (from June 2012)

Executive Committee of Management

Kathryn Fagg, Chair (from 20 September 2010)

Peter Bartlett (from 3 March 2012)

Stephen Carpenter (from 3 March 2012)

Des Clark (from July 2013 - June 2015)

Joseph Corponi (from 3 March 2012)

Paul Donnelly (from 22 June 2015)

Margaret Farren-Price (from 3 March 2012)

John Higgs OAM (from 18 September 2009 to 24 August 2014)

Julie Kantor (from 13 April 2006)

Eda Ritchie AM (from 14 July 2014)

Development Advisory Committee

Margaret Farren-Price (from October 2012),
Chair (from 2014)

John Higgs OAM, Chair (from 2009 to 2014)

Peter Armstrong (from June 2013) - external member

Peter Bartlett (from June 2012)

Julie Kantor (from 2009)

Eda Ritchie AM (from 14 July 2014)

Christine Sather (from August 2013) - external member

Peter Wyles (from August 2012) - external member

Works of Art Committee

Des Clark (from July 2013 to June 2015)

John Higgs OAM (from July 2013 to August 2014)

Julie Kantor (from July 2013)

EXECUTIVE MANAGEMENT

Chief Executive Officer

Mary Vallentine AO

Director of Corporate Services

Nesreen Bottrill

Finance, Administration, Human Resources,
Information Technology

Director of Production & Presenter Services

Greg Diamantis

Venue Hire, Event and Production Management,
Technical, Stage Door, Facilities Management

Head of Artistic Planning

Marshall McGuire

Artistic Programming, Learning and Access

Director of Marketing & Customer Relations

Robert Murray

Marketing, Publicity, Customer Relationship Management,
Ticketing, Front of House, Foyer Bars and Retail

Director of Development

Sandra Robertson

Sponsorship, Philanthropy



Mary Wilson,
American Songbook Festival,
June 2015
Photo: Ros O'Gorman

Environmental Performance

Melbourne Recital Centre has expanded its commitment to environmental sustainability by minimising its environmental impacts and promoting a green future for our community.

Achievements to Date

Melbourne Recital Centre continued to work towards reducing its environmental impact during 2014/15.

In alignment with our Environment & Sustainability Policy, we continued to pursue our Action Plan to achieve our goals. Our Sustainability Committee champions sustainability issues and awareness across the organisation and oversees the implementation of the Action Plan.

Melbourne Recital Centre has targets for improving environmental performance in terms of waste, energy and water reduction, with established recycling streams for co-mingled, cardboard, office paper, fluorescent tubes, lamps, batteries and used printer cartridges.

We have worked closely with Melbourne Theatre Company, Script Bar & Bistro as well as tenant Blondie Café, to reduce environmental impacts through sharing waste removal. Services and equipment are obtained from the environmentally conscious supplier Ikon Waste Solutions.

LED luminaires are now used in our foyers, bathrooms, corridors and loading dock. The focus for 2015/16 will be to replace the dichroic fixtures in Production and Event areas with energy-efficient LED luminaires.

This will have a twofold effect of a reduction in direct energy consumption and a reduction of HVAC costs relating to the heat dispersion of the current lighting fixtures. With the support of capital funding from Creative Victoria, our HVAC software system has been upgraded to provide a more efficient process of scheduling the building climate control systems. This tool will also provide the detail to enable a more targeted approach to energy management of the HVAC systems.

The practice of minor adjustments and pre-emptive measures on days of extreme weather continued to yield positive results. In cooperation with Melbourne Theatre Company, the amount of breakdown maintenance needed reduced over the last 12 months due to a more proactive approach to HVAC system management.

We continued to prioritise sustainability practices in our purchasing needs, including using recycled paper in marketing collateral and the office. In addition, the use of electronic marketing continued to increase, further reducing the amount of paper used by traditional marketing collateral.

Energy

The data below was collected through energy retailer billing information, Optergy energy management software and the Future Climate emissions calculator (gas only). The energy values represent usage by Melbourne Recital Centre and the café tenancy space occupied by Blondie Café.

Indicator	Electricity kWh (Building)		Electricity (HVAC Chilled Water)		Natural Gas MJ (Building)		Natural Gas MJ (Heating Hot Water)	
	2013-14	2014-15	2013-14	2014-15	2013-14	2014-15	2013-14	2014-15
Total energy usage	818,288	806,288	465,601	429,191	957,015	747,885	1,268,263	1,239,600
Greenhouse gas emissions (t CO₂e)	958.45	958.75	695	641	371	253	741	724
Percentage of electricity purchased as Green Power	25%	25%	25%	25%	Not applicable	Not applicable	Not applicable	Not applicable
Greenhouse gas emissions per capita (t CO₂e/visitor) for electricity and gas	0.0053	0.0058	0.0038	0.0039	0.0021	0.0015	0.0041	0.0044

Waste

Melbourne Recital Centre shares waste management services with Melbourne Theatre Company, Script Bar & Bistro and Blondie Café, Melbourne Recital Centre's tenancy space, to minimise environmental impacts and costs. The following units represent the collective waste generated. Commencing in 2015/16, organic waste separation and conversion to renewable energy will be trialled in order to achieve a target of 90 per cent recycling.

Indicator	General		Co-mingled		Cardboard and Paper	
	2013-14	2014-15	2013-14	2014-15	2013-14	2014-15
Total units of waste by waste stream (metres cubed)	244	108	69	38	206	104
Cubic metres per capita*	0.0013	0.0007	0.00038	0.00023	0.0011	0.00063

Water and Sewerage

Indicator	Water		Sewerage	
	2013-14	2014-15	2013-14	2014-15
Total units of metered water consumed by usage types (kilolitres)	2207	2085	1967	1972
KL per capita*	0.0122	0.0126	0.0108	0.0119

*Calculated on annual attendance figures excluding artists and staff

Paper

Melbourne Recital Centre continues to utilise Fuji Xerox Australia's Performer Carbon Neutral multipurpose office paper, a chlorine and acid-free alternative. The pulp is sourced from certified farmed plantations and as a result, old growth forest or hardwood materials are unable to be used in the recycling process. Fuji Xerox Australia has undertaken a rigorous verification and assessment process to provide a carbon-neutral product for office use.

Indicator	2013-14	2014-15
Total units of copy paper used (reams)	515	374
Percentage of 50% recycled content copy paper purchased (%)	0%	0%
Percentage of 100% recycled content copy paper purchased (%)	0%	0%
Percentage of carbon neutral copy paper purchased	100%	100%

Greenhouse Gas Emissions

The emissions disclosed in the section below are taken from the previous sections and brought together here to show Melbourne Recital Centre's greenhouse gas footprint.

Indicator	2013-14	2014-15
Total greenhouse gas emissions associated with energy use (t CO₂e)	2,766	2,578
Total greenhouse gas emissions associated with air travel (t CO₂e)	Zero. Air travel 100% offset at time of purchase.	Zero. Air travel 100% offset at time of purchase.
Total greenhouse gas emissions associated with waste production (t CO₂e)	26 Est.	22 Est.

Financial Summary

Five-Year Financial Summary

	2014/15	2013/14	2012/13	2011/12	2010/11
Income from Government	4,886,000	3,859,000	3,859,000	3,859,000	4,121,800
Total income from transactions	13,056,773	11,104,531	10,496,132	9,840,678	9,195,755
Total expenses from transactions	12,793,743	10,977,531	10,478,168	9,699,289	8,780,553
Net result from transactions	263,030	127,000	17,946	141,389	415,202
Net result for the period	263,636	30,405	13,510	96,728	423,859
Net result before depreciation	839,816	578,439	465,792	591,113	921,439
Net cash flow from operating activities	465,861	1,089,771	599,976	378,580	1,523,283
Total Assets	11,626,736	11,599,744	10,893,742	10,512,253	10,596,219
Total Liabilities	2,668,588	2,909,250	2,256,655	1,888,676	2,069,370

Current Year Financial Review

Overview

Melbourne Recital Centre's diverse program of presentations and venue hire activities resulted in increased commercial and philanthropic revenue in 2014/15. The one-off SummerSalt Outdoor Arts Festival was supported by funding from Government, philanthropy and corporate sponsors, incurring \$1.87 million in expenses.

The financial result for the Centre was a surplus of \$263,636, an increase of \$233,231 on the previous year. The result before depreciation is a surplus of \$839,816, highlighting improved commercial and philanthropic revenue and reduced Centre operating costs. In particular this result includes the recognition of a significant non-cash item, a painting donated by Barbara Blackman.

Financial Performance and Business Review

The net result for the period was \$263,636, which is \$233,231 more than the \$30,405 in 2013/14. This result reflects the significant increase in philanthropic revenue, specifically the donated asset, supported by steady growth in sales and reduced Centre operating costs throughout the period.

Excluding the SummerSalt Outdoor Arts Festival revenue, the percentage of non-government income to total revenue continued to increase from 65 to 66 per cent.

Financial Position Balance Sheet

The company's net asset position is \$8,958,148, an improvement of \$267,654 on 2013/14. Assets increased by \$26,992 due to increased cash and cash equivalent assets, and were support by the reduction in liabilities of \$240,662 due to the decrease in trade and other payables held at year end.

Cash Flows

The net cash flow from operating activities was \$465,861, which is a decrease of \$623,910 from the previous year. This was due primarily due a decrease in trade and other payables.

Statement of Corporate Governance

Manner of Establishment

Melbourne Recital Centre was registered on 2 March 2006 with the sole member being the State of Victoria, represented by the Minister for the Arts. Melbourne Recital Centre is a company limited by guarantee and a public entity under the *Public Administration Act 2004*. Melbourne Recital Centre has its own constitution and has compliance and reporting requirements under both the *Financial Management Act 1994* (Victoria) and the *Corporations Act 2001* (Commonwealth). Melbourne Recital Centre is registered with the Australian Securities and Investment Commission. The Directors of Melbourne Recital Centre are committed to the highest standard of corporate governance and acknowledge the need for continued maintenance of governance practice and ethical conduct by all Directors and employees.

Accordingly, they have ensured that systems and procedures are in place to provide appropriate assurance that the Company undertakes its activities and functions in accordance with:

- all legal requirements;
- the best interests of members;
- an environment that meets relevant standards; and
- a manner that is responsible to all stakeholders and the wider community.

Objectives of the Company

Melbourne Recital Centre Constitution, Clause 2:

The objectives of Melbourne Recital Centre include the promotion of music, by, without limitation:

- undertaking preparations for - and assisting in the funding of - the construction of Melbourne Recital Centre;
- commissioning musical performances and programming for Melbourne Recital Centre;
- promoting Melbourne Recital Centre; and
- planning and managing the operations of Melbourne Recital Centre.

Powers and Duties of Directors

Melbourne Recital Centre Constitution, Clause 13.6:

The Directors are responsible for managing the Company's business and affairs and may exercise to the exclusion of the Company in general meeting all the Company's powers which are not required, by the Corporations Act 2001 (Commonwealth) or by Melbourne Recital Centre's constitution, to be exercised by the Company in general meeting.

The Directors may decide how cheques, promissory notes, bankers drafts, bills of exchange or other negotiable instruments must be signed, drawn, accepted, endorsed or otherwise executed (as applicable) by or on behalf of the Company.

The Directors may pay out of the Company's funds all expenses of promotion, formation and registration of the Company and the vesting in it of the assets acquired by it.

The Directors may:

- appoint or employ a person to be an officer, agent or attorney of the Company for the purposes, with the powers, discretions and duties (including powers, discretions and duties vested in or exercisable by the Directors), for the period and on the conditions they think fit;
- authorise an officer, agent or attorney to delegate all or any of the powers, discretions and duties vested in the officer, agent or attorney; and
- subject to any contract between the Company and the relevant officer, agent or attorney, remove or dismiss any officer, agent or attorney at any time, with or without cause.

A power of attorney may contain any provisions for the protection and convenience of the attorney or persons dealing with the attorney that the Directors think fit.

Board Committees

The Board has established a number of standing committees whose decisions become recommendations for consideration by the Board:

- Governance, Audit and Risk Committee
- Remuneration Committee
- Committee of Management
- Development Advisory Committee
- Works of Art Committee

Other established standing committees include an Occupational Health and Safety Committee, an Environmental Sustainability Committee and a Staff Consultative Committee.

Committee of Management – Melbourne Recital Centre Land and Building

On 23 October 2008, Melbourne Recital Centre land at Southbank (Crown Allotment 2180, City of South Melbourne, Parish of Melbourne South) was reserved for public purposes (arts and recital centre). The Minister for the Environment and Climate Change appointed Melbourne Recital Centre as the Committee of Management for that reserve with effect from that date. The Melbourne Recital Centre Committee of Management is the Board of Directors of Melbourne Recital Centre.

Financial and Other Information Retained by the Accountable Officer

Relevant information detailed in Financial Reporting Direction (FRD) 22E Standard Disclosures in the Report of Operations under the *Financial Management Act 1994* Section 3 is retained by the Company's Accountable Officer. The items listed below are available to the relevant ministers, Members of Parliament and the public on request (subject to the freedom of information requirements, if applicable):

- A. a statement that declarations of pecuniary interests have been duly completed by all relevant officers;
- B. details of shares held by a senior officer as nominee or held beneficially in a statutory authority or subsidiary;
- C. details of publications produced by Melbourne Recital Centre about the activities of Melbourne Recital Centre and where they can be obtained;
- D. details of changes in prices, fees, charges, rates and levies charged by Melbourne Recital Centre for its services, including services that are administered;
- E. details of any major external reviews carried out in respect of the operation of Melbourne Recital Centre;
- F. details of any other research and development activities undertaken by Melbourne Recital Centre that are not otherwise covered either in the report of operations or in a document which contains the financial statement and report of operations;
- G. details of overseas visits undertaken including a summary of the objectives and outcomes of each visit;
- H. details of major promotional, public relations and marketing activities undertaken by Melbourne Recital Centre to develop community awareness of the services provided;
- I. details of assessments and measures undertaken to improve the occupational health and safety of employees, not otherwise detailed in the report of operations;
- J. a general statement on industrial relations within Melbourne Recital Centre and details of time lost through industrial accidents and disputes, which are not otherwise detailed in the report of operations;
- K. a list of major committees sponsored by Melbourne Recital Centre, the purposes of each committee and the extent to which the purposes have been achieved; and
- L. details of all consultancies and contractors including: consultants/contractors engaged; services provided; and expenditure committed to for each engagement.

National Competition Policy

The Company is committed to the implementation of requirements of the competitive neutrality principles and is satisfied that its activities comply with the Victorian Government's Competitive Neutrality Policy.

Implementation of the Victorian Industry Participation Policy

In October 2003, the Victorian Parliament passed the *Victorian Industry Participation Policy Act 2003*, which required public bodies and departments to report on the implementation of the Victorian Industry Participation Policy (VIPPP). The Company is required to apply the VIPPP in all tenders over \$3 million in metropolitan Melbourne and \$1 million in Victoria. The Company did not commence or complete any contracts during 2014/15 to which the VIPPP applies.

Compliance with the Protected Disclosure Act 2012 (formerly the Whistleblowers Protection Act 2001)

The *Protected Disclosure Act 2012* encourages and assists people in making disclosures of improper conduct by public officers and public bodies. The Act provides protection to people who make disclosures in accordance with the Act and establishes a system for the matters disclosed to be investigated and rectifying action to be taken.

Melbourne Recital Centre is not a public body to which disclosures may be made. Disclosures of improper conduct or detrimental action relating to Melbourne Recital Centre should generally be made to the Independent Broad-based Anti-corruption Commission (IBAC). Further information about making disclosures to the IBAC can be found at www.ibac.vic.gov.au.

Melbourne Recital Centre is committed to the aims and objectives of the Act. In particular, Melbourne Recital Centre does not tolerate improper conduct by its staff or the taking of reprisals against those who come forward to disclose such conduct.

As required by s.58(5) of the Act, Melbourne Recital Centre has made the Protected Disclosure Policy available on its website melbournerecital.com.au, which provides procedures for protecting people who make protected disclosures from detrimental action by Melbourne Recital Centre or its staff.

Statement of Corporate Governance continued

Attestation on Risk Management

I, Kathryn Fagg, certify that Melbourne Recital Centre has complied with the Ministerial Standing Direction 4.5.5 - Risk Management Framework and Processes, except that the annual review of the risk register was delayed and will be reviewed in September 2015.



Kathryn Fagg

Chair, Melbourne Recital Centre

Internal Audit

Melbourne Recital Centre appointed Pitcher Partners as its internal auditors in 2011. They have subsequently developed an audit plan, having due regard for the Company's risk management program.

In 2015, Melbourne Recital Centre's internal auditors completed one audit of Melbourne Recital Centre's Payroll system and process.

Employment and Conduct Principles

Staff are appointed under ongoing, fixed-term or casual contracts as per Melbourne Recital Centre Enterprise Agreement 2012 and the Government Sector Executive Remuneration Panel and are bound by the Code of Conduct for Victorian Public Sector Employees. The Melbourne Recital Centre complies with the values (Section 7) and employment principles (Section 8) of the *Public Administration Act 2004*.

Melbourne Recital Centre is committed to applying merit and equity principles when appointing staff. The selection processes ensure that applicants are assessed and evaluated fairly and equitably on the basis of the key selection criteria and other accountabilities without discrimination. Employees have been correctly classified in workforce data collections.

Occupational Health and Safety Policy

Melbourne Recital Centre has an Occupational Health and Safety Committee, which monitor, review and update the Centre's occupational health and safety policies and procedures. The Committee meets regularly and reports to Executive Management and Board. Occupational Health and Safety policies and procedures are included in the revised induction process and individual OHS training is provided for staff as necessary.

Disability Action Plan

Melbourne Recital Centre regularly consults with Arts Access regarding accessibility at the Centre. Melbourne Recital Centre's Disability Action Plan has been completed and submitted to the Human Rights Commission for registration in accordance with the *Disability Discrimination Act 1992*. Melbourne Recital Centre is committed to making its performances, services and facilities accessible to the community.

Compliance with the Building Act 1993

At 30 June 2015, Melbourne Recital Centre was responsible for one government-owned building. Pursuant to its role as Committee of Management, Melbourne Recital Centre complies with building and maintenance provisions of the *Building Act 1993*. Melbourne Recital Centre also complies with the *Building Code of Australia* and with the relevant Australian standards for building and maintenance works.

Major Works (more than \$50,000)

There has been one major works project completed in 2014/15 being the replacement of the Elisabeth Murdoch Hall sound desk and part of the PA system.

Workforce – Staffing Trends

	Ongoing Employees			Fixed-Term & Casual Employees	
	Employees (Headcount)	Full Time (Headcount)	Part Time & Variable Time	Full-Time Equivalents	FTE
June 2015	40	29	11	36	18
June 2014	37	28	9	33	11

	2015		2014		
	Ongoing Employees	Fixed-Term & Casual Employees	Ongoing Employees	Fixed-Term & Casual Employees	
	Employees (headcount)	(FTE)	FTE	Employees (headcount)	FTE
Gender					
Male	17	16	15	16	15
Female	23	20	3	21	15
Total	40	36	18	37	33
Age					
Under 25	1	1	2	0	0
25-34	16	14	9	20	18
35-44	11	10	5	10	9
45-54	8	7	2	4	3
55-64	3	2	0	2	2
Over 64	1	1	0	1	1
Total	40	36	18	37	33
Classification					
VPS 1	2	1	3	0	0
VPS 2	12	9	12	10	7
VPS 3	9	9	2	11	10
VPS 4	7	7	1	7	7
VPS 5	6	6	0	4	4
VPS 6	0	0	0	0	0
STS	0	0	0	0	0
Other	4	4	0	5	5
Total	40	36	18	37	33

Statement of Corporate Governance continued

Cultural Diversity, Women, Young People and Indigenous Affairs

The objectives and actions of Melbourne Recital Centre's Cultural Diversity Plan inform our operations and ensure that the varied cultures of the world, and particularly the Cultural and Linguistically Diverse (CALD) groups in Victoria, are celebrated through the Centre's programming and associated activities. Many of our staff speak languages other than English. The full-time equivalent staff members consist of 23 female and 31 male personnel, with a disproportionate number of male casual staff in 2014/15. Where appropriate, Melbourne Recital Centre provides communications, program notes and other announcements in languages other than English.

Music for people from all walks of life is central to Melbourne Recital Centre's mission and our program reflects diversity of music from around the globe. The Centre's belief and interest in music in all its forms and socio-cultural contexts have resulted in a rich and varied program that celebrates and showcases various cultures' musical traditions. Notable programs include Jun Tian Jun He Ensemble workshops and concert as part of the 2014

Melbourne Festival, French Baroque ensemble Les Arts Florissants, Finnish musicians Sibelius 150 Trio, Hawaiian ukulele player Jake Shimabukuro, and two *Spirit of India* concerts as part of the long-term collaboration with Nataraj Cultural Centre.

Black Cabaret, co-presented with Malthouse Theatre as part of SummerSalt Festival, assembled some of Australia's finest indigenous musicians, comedians and dancers for a week of outdoor entertainment.

Through the ticket and transport subsidy offered by Share the Music, Melbourne Recital Centre has continued to increase the engagement and participation of CALD community groups. Members of the Asylum Seeker Resource Centre Music Group and the multicultural student population of Wooranna Park Primary School have engaged in repeat visits to the Centre. The implementation of live music programs delivered through Share More Music beyond the Centre has reached clients from diverse backgrounds, including Wesley Mission Victoria and Multicultural Aged Care Services, Geelong.

Details of Government Advertising Expenditure (campaigns with a media spend of \$150,000 or greater)

SummerSalt Outdoor Arts Festival						
Name of Campaign	Start/End Date	Advertising (media expenditure) 2014/15 (ex. GST)	Creative and Campaign Development Expenditure 2014/15 (ex. GST)	Research and Evaluation Expenditure 2014/15 (ex. GST)	Print and Collateral Expenditure 2014/15 (ex. GST)	Other Campaign Expenditure 2014/15 (ex. GST)
SummerSalt was an outdoor festival taking place in the Melbourne Arts Precinct between 23 January and 21 February 2015 intended to activate the precinct over summer with accessible events and public artworks. The festival was supported by an above-the-line marketing campaign, which included print, outdoor and online marketing, in collaboration with presenting partners, tourism authorities and corporate partners.	Festival dates: 23 Jan-21 Feb 2015 Campaign dates: October 2014 - February 2015	\$119,560	\$20,000	\$25,000	\$116,500	\$56,500

Consultants

In 2014/15 there were two consultancies where the total fees payable to the consultants were \$10,000 or greater. The total expenditure incurred during 2014/15 in relation to these consultancies was \$54,125 (excl. GST).

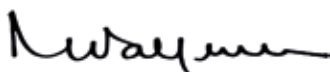
In 2014/15 there was one consultancy where the total fees payable to the consultant was less than \$10,000. The total expenditure incurred during 2014/15 in relation to this consultancy was \$6,000 (excl. GST).

Details of individual consultancies (valued at \$10,000 or greater)

Consultant	Purpose of Consultancy	Start Date	End Date	Total Approved Project Fee (ex. GST)	Expenditure 2014/15 (ex. GST)	Future Expenditure (ex. GST)
Catherine T Brennan-Martin	Advice on SummerSalt Festival	1/09/2014	31/12/2014	\$16,125	\$16,125	\$NIL
Pondlife Pty Ltd	Marketing Consultant for SummerSalt Festival	24/09/2014	23/02/2015	\$38,000	\$38,000	\$NIL

Accountable Officer's Declaration

In accordance with the *Financial Management Act 1994*, I am pleased to present Melbourne Recital Centre's Annual Report for the year ending 30 June 2015.

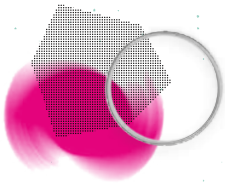
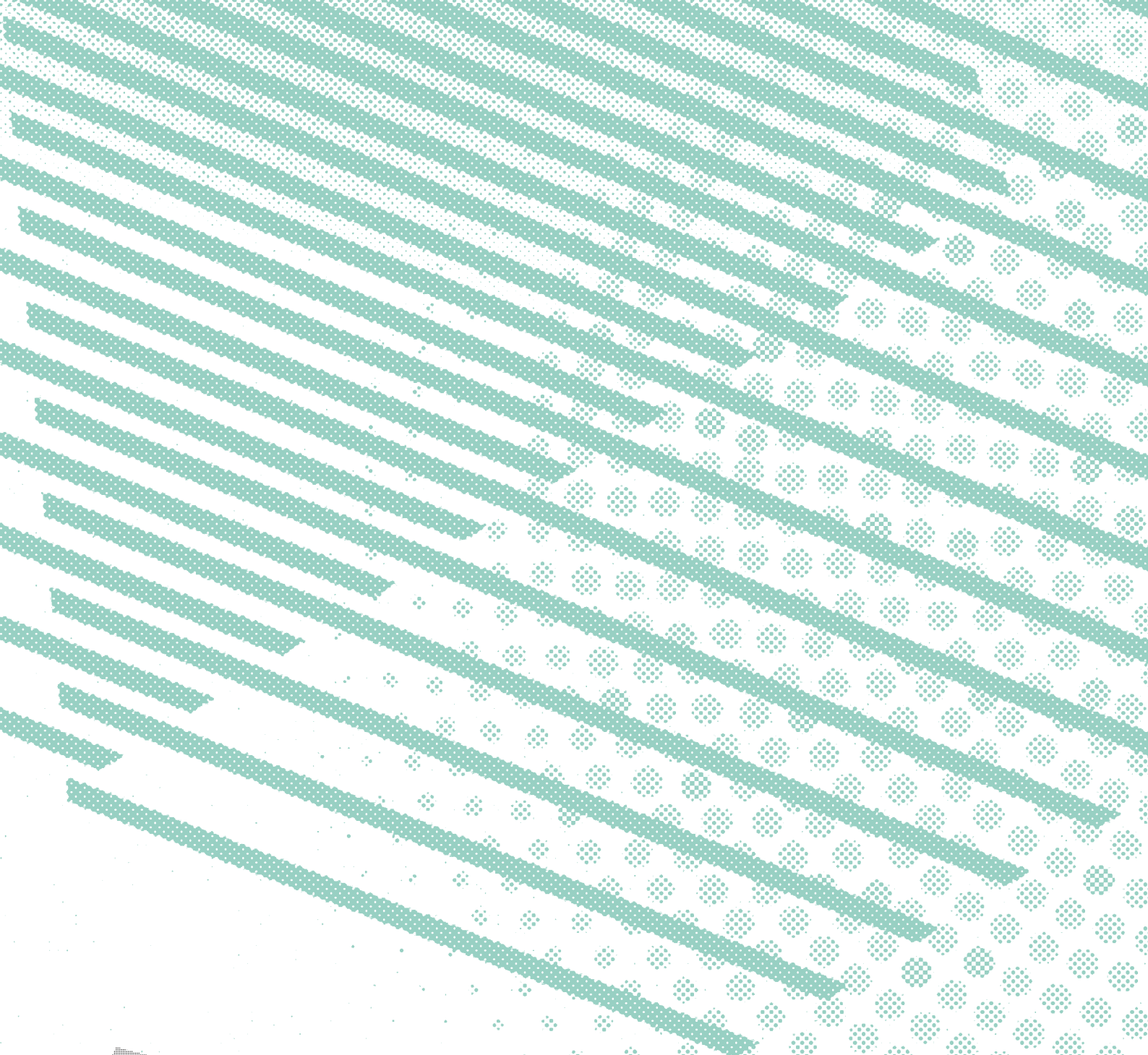


Mary Vallentine AO

Chief Executive Officer

Melbourne Recital Centre

18 August 2015



MELBOURNE
RECITAL
CENTRE

31 Sturt Street, Southbank, Victoria 3006 Australia
T: +613 9699 2228 | mail@melbournerecital.com.au
ABN 46 118 617 619

melbournerecital.com.au

**CREATIVE
VICTORIA**



