



MELBOURNE PART 1  
RECITAL CENTRE  
ANNUAL REPORT 2010-2011



# CONTENTS

- 1 ABOUT MELBOURNE RECITAL CENTRE
- 2 KEY ACHIEVEMENTS
- 4 CHAIR'S MESSAGE
- 6 REPORT FROM THE CEO
- 8 OUR OPERATIONS
- 9 HIGHLIGHTS OF OUR PROGRAM
- 14 A YEAR OF MUSIC MAKING
- 16 RECORDING, BROADCASTING AND TECHNOLOGICAL HIGHLIGHTS
- 17 SUPPORT SERVICES AND OPERATIONS
- 18 OUR BUSINESS PARTNERS AND KEY DONORS
- 19 OUR PRESENTING PARTNERS AND ASSOCIATES
- 22 OUR PEOPLE
- 24 ENVIRONMENTAL PERFORMANCE AND OFFICE BASED ENVIRONMENTAL IMPACTS
- 25 FINANCIAL SUMMARY
- 26 STATEMENT OF CORPORATE GOVERNANCE

.....  
*“The intimate Salon provided the perfect setting for Belle du Berry.”*  
.....

JESSICA NICHOLAS,  
THE AGE, 27 AUGUST 2010

.....  
*“Thank you so much for a wonderful experience at Elisabeth Murdoch Hall. What a beautiful space.”*  
.....

CALDER QUARTET

Photography: MaryRose Harrison, Daniel Ng, Damian Vincenzi DWV Photography, James Knowler, Georgia Metaxas, Pia Johnson, Tania Jovanovic, Marcel Aucar

# ABOUT MELBOURNE RECITAL CENTRE

## COMPANY OVERVIEW

### OUR VISION

Bringing the joy of music to everyone!

### OUR MISSION

To build an organisation and venue that create the opportunity to

- Present artistic performances
- Promote artistic excellence
- Nurture artistic expression

in an environment that is accessible and valued by the community.

### OUR VALUES

**RESPECT** We respect and celebrate each other's differences and individuality.

**EXCELLENCE** We are dedicated to excellence in everything we do.

**CREATIVITY** We have the courage to innovate and be creative; we applaud success and we embrace the challenge of experimentation.

**INCLUSIVENESS** Our venue welcomes people and works to create value for everyone.

**TEAMWORK** We are team players and support each other whenever possible.

**ACCOUNTABILITY** We act with integrity and fairness in all our dealings with each other, with our clients, customers and suppliers.

**LOYALTY** We value the importance of all our people and we reward their contributions.

### OUR ASPIRATIONS

The Board and Management team have developed five aspirations in accordance with the organisation's vision of *bringing the joy of music to everyone!*

These aspirations are:

1. To expand and broaden our programs and audience.
2. To build our financial and service capacities.
3. To deliver stakeholder value.
4. To aspire to creative leadership, with an emphasis on the Australian voice.
5. To build MRC's position in the international context.

## OUR ARTISTIC VISION

Melbourne Recital Centre (MRC) holds in trust one of the finest acoustic spaces in the world and celebrates that role with a program of concerts, events and activities in many forms and genres. MRC nurtures the development of artists and artistic expression and rejoices in the diversity of music from all corners of the world.

The Melbourne Recital Centre team is passionate about music. We are committed to sharing this passion and excitement with our audiences, facilitating the development of artists and their work and the concert programming of our presenting partners.

We see ourselves as being driven by excellence and passion: in the work that we present and the way that we present it.

We are fired by the vision of a world made more beautiful through creativity where great music can be enjoyed by everyone.

.....

*“What a fabulous hall this is. It has been a fantastic experience and great pleasure to play in this gorgeous Melbourne Recital Centre. Elisabeth Murdoch Hall has one of the best acoustics I’ve ever experienced, and it is so beautiful and inspiring.”*

.....

PHILIPPE BIANCONI (PIANO)

.....

*“What a great place to sing.”*

.....

ANDREAS SCHOLL  
(COUNTERTENOR)

# KEY ACHIEVEMENTS

## MELBOURNE RECITAL CENTRE HAS HAD A YEAR OF OUTSTANDING GROWTH IN BOTH ITS PROGRAMS AND THE SIZE OF ITS AUDIENCES.

The Centre has attracted some of the best artists from around the globe because of its superb acoustics and an enviable reputation as one of the world's best concert halls. During the year, MRC launched its inaugural Great Performers series, which brings Melbourne audiences the very best international recitalists. These are the artists who can communicate the absolute essence of the music they perform and are in demand the world over.

Throughout the year MRC has pursued its ambition to develop a distinct brand of dynamic music programming where quality, diversity and creativity are its hallmarks. With acoustics that enable audiences to enjoy great live music experiences, MRC can present the most diverse musical genres and reach the widest possible audiences. In the space of just days, the Elisabeth Murdoch Hall played host to the ambitious production of Bach's *St Matthew Passion* featuring Australia's best singers and period instrumentalists, New York's Naturally 7, who blend hip-hop, beat-boxing, rap, gospel and R&B; and the Greek ensemble En Chordais, who celebrate the sounds and traditions of the Mediterranean. This commitment to program courageously across musical genres sets

MRC apart from more traditional concert halls, creating a unique place for musicians and music lovers to meet.

In 2010–11 MRC ensured that great live music could also be enjoyed by even the youngest of audiences with the launch of its first music festival for children, MusicPlay – a three-day festival presenting a non-stop line-up of free and paid performances and interactive live music experiences for babies through to children aged 12. The festival program was entertaining, fun and interactive while contributing to the creative and intellectual development of children through the experience of music activities. The foyers came alive with music and both the children and their parents were involved and had fun.

We continue to be the hub of music-making in Melbourne, hosting dozens of concerts by local solo musicians and ensembles. We are immensely proud to support, nurture and provide a platform for so many outstanding musicians, whether well-established or emerging.

Melbourne Recital Centre also confirmed its position as a home of music through its provision of studio services for recordings and broadcasts for ensembles, orchestras and corporate clients. MRC's sound engineers have established productive partnerships with radio stations allowing MRC to widen its audience base through broadcasts of superb quality.

The table below provides a summary of the MRC's performance activities for 2010–11, compared with 2009–10 and 2008–09. During 2010–11, MRC increased attendances, number of performances, as well as website traffic.

	2008–2009	2009–2010	2010–2011
Number of performances	117	188	320
Audience numbers	74,774	96,828	133,891
Number of ticketed attendances	73,774	88,755	122,975
Web visits	123,679	315,679	394,451
Broadcast audience	N/A	84 broadcasts to an average audience of 250,000 per broadcast	81 broadcasts to an average audience of 250,000 per broadcast
Value of tickets sold	\$1,204,115	\$2,161,491	\$3,780,273
Number of members	373	464	530
Customer satisfaction level	N/A	N/A	98%



.....  
"Melbourne Recital  
Centre is one of the greatest  
venues around the world."  
.....

EN CHORDAIS

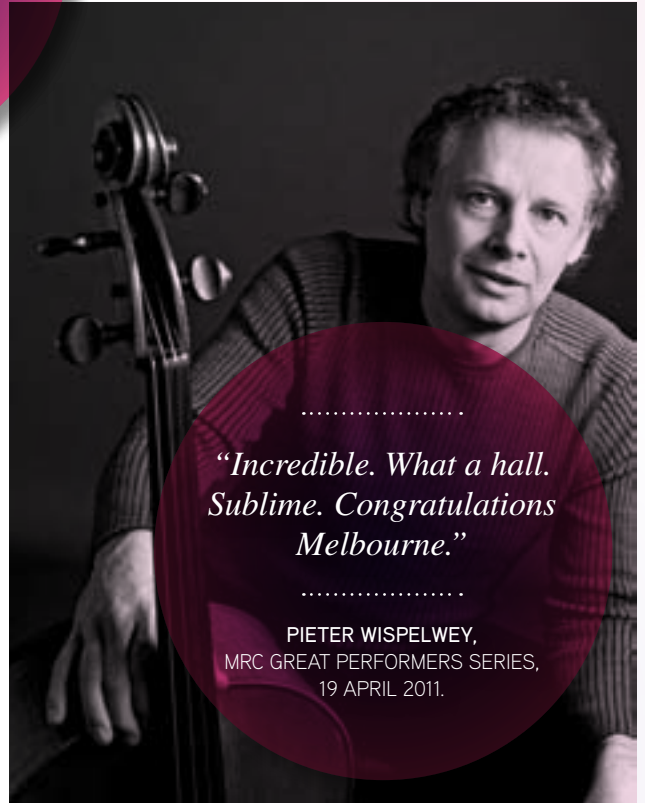


.....  
EN CHORDAIS,  
30 MARCH 2011  
.....

ERIC BIBB AND RUTHIE FOSTER



KAZOO WORKSHOP, MUSICPLAY



.....  
"Incredible. What a hall.  
Sublime. Congratulations  
Melbourne."  
.....

PIETER WISPELWEY,  
MRC GREAT PERFORMERS SERIES,  
19 APRIL 2011.

PIETER WISPELWEY



SCHAROUN ENSEMBLE BERLIN

# CHAIR'S MESSAGE

## I AM HONOURED AND DELIGHTED TO PRESENT MELBOURNE RECITAL CENTRE'S ANNUAL REPORT FOR 2010-2011.

Building on a programming philosophy of presenting a diversity of musical styles to engage the broadest audience, MRC has significantly increased attendances compared with prior years. As a result of a programming strategy that has brought new and different artists and ensembles to its stages, MRC has attracted new audiences of all ages while continuing to build on the strong supporter base for chamber music developed in Melbourne by MRC and its presenting partners. The reputation of Elisabeth Murdoch Hall and the Salon, with their sublime yet intimate acoustics, has also grown so that MRC is the preferred place for music for Australian artists and ensembles as well as those visiting from further afield.

It is particularly encouraging to announce an increase in audience numbers of just over 37,000 in 2010-11 which is a 38% increase on the previous year. Regular radio broadcasts have increased our total audience significantly.

My appointment to the Board took effect in September 2010 and I pay tribute to my immediate predecessor Mary Waldron who was Acting Chair from June 2010. I also wish to acknowledge inaugural Chairman of MRC, Jim Cousins who retired at that time. The very existence let alone the extraordinary quality of Melbourne Recital Centre is a result of the hard work and dedication of many people but the contribution of Jim Cousins and directors Mary Waldron, Bill McHarg and Matt Zema who all retired in 2010, is cause for special note.

Mary Vallentine was appointed Chief Executive Officer in September 2010 and a new management structure was put in place in early 2011. Kirsten Siddle had been Acting CEO for the first part of the year and the Board pays special tribute to her for the strength and stability she provided to MRC during this period and for introducing a more diversified programming strategy. Melbourne Recital Centre's new management team places the company in an excellent position to build on the exciting achievements to date, ensuring that MRC becomes the focus for exhilarating and inspiring music making for years to come.

Renewed momentum in the development of the Southbank Cultural precinct was evident at a meeting of arts companies and educational bodies which occurred in May. A vibrant precinct with retail, performance, rehearsal and residential development will benefit artists, arts organisations and audiences and support further growth in tourism to this state. Victoria is undoubtedly a leader in attracting tourists with its dynamic and growing major events strategy. MRC looks forward to joining arts and educational partners from the precinct to bring the Southbank Cultural precinct to final fruition.



ETIHAD AIRWAYS DINNER ON STAGE WITH THE AUSTRALIAN STRING QUARTET



COSMO COSMOLINO

The Government of Victoria has been a strong and consistently supportive partner of Melbourne Recital Centre. We acknowledge the assistance of Premier Brumby's government and thank Minister Peter Batchelor for his personal interest and support. MRC welcomes the new Government of Ted Baillieu MLA, Premier and Minister for the Arts with whom we look forward to working to further develop the great potential of our exciting venue. Arts Victoria has provided ongoing advice and support to MRC and we are especially grateful for their assistance with the development of our new cafe due to open in October 2011.

At the very special 102nd birthday celebration in February for Australia's most generous and inspiring philanthropist, Dame Elisabeth Murdoch AC, DBE, MRC launched the Elisabeth Murdoch Creative Development Fund. Its purpose is to encourage philanthropists and supporters to engage with MRC and its programs by providing financial support that enables the creation of music and educational programs for audiences of all ages.

Many hundreds of patrons have chosen to support our subsidised ticketing program, *Share the Music*, enabling disadvantaged audiences to attend concerts while others have chosen to support young and emerging artists, family and children's programs.

Our corporate partners are Audi Australia, our wonderful principal partner for a third year, and Etihad Airways, whose invaluable support enables artists from around the globe to perform at MRC. We are immensely grateful for this support. Yarra Yering, Bang & Olufsen and Art Series Hotels have each provided welcome support towards our programs throughout 2010 and we acknowledge their contribution with thanks.

The support of individuals is immensely appreciated and we pay tribute to the generosity of the Kantor and Calvert-Jones Families and to Richard Mills AM and Harold Mitchell AC for their support.

To my fellow Board directors – The Hon Mary Delahunty, John Higgs, Julie Kantor, Richard Mills AM, Harold Mitchell AC and Tom Bonvino – I express my personal appreciation and to the management and staff of MRC, I thank you on behalf of all music-lovers in Melbourne for your hard work and enthusiastic support, making MRC *the place for music* in Melbourne.



A handwritten signature in cursive script that reads "K. J. Fagg".

Kathryn Fagg  
Chair, Melbourne Recital Centre



TOMASZ STAŃKO QUINTET

# REPORT FROM THE CEO

MELBOURNE RECITAL CENTRE CELEBRATES ITS FIRST FULL TWO YEARS OF OPERATION IN 2011 AND WE THANK THE ARTISTS AND ORGANISATIONS WHO HAVE PARTNERED WITH US TO PRESENT SUCH AN OUTSTANDING RANGE OF PERFORMANCES ACROSS SO MANY MUSICAL GENRES.

From world music to jazz and popular contemporary, choral, operatic and orchestral music, from baroque to the present day, music of all kinds has filled our halls.

We know these performances are the result of the ambitions, creativity, hard work and generous support of many. First and foremost are the artists who bring this building to life providing pleasure, inspiration and stimulation to each and every member of the audience. Equally important are the audiences themselves who support the artists and ensembles, energised by the magnificent music produced in the splendid acoustic of the Elisabeth Murdoch Hall and Salon. Our partners – both organisations and performing groups – present performances of the highest quality and have contributed to the rejuvenation of live performance in Melbourne that has occurred with the opening of Melbourne Recital Centre. Partnerships are central to programming at MRC and we are delighted to complement the programs offered by Melbourne Chamber Orchestra, Melbourne Arts Festival, Melbourne International Jazz Festival, Melbourne Symphony Orchestra and Victorian Opera among others and our national partners, Australian String Quartet, Musica Viva Australia and Australian Brandenburg Orchestra, with MRC's own presentations.

This year we were thrilled with the response to our new series, *Great Performers 2011* presented in association with ABC Classic FM, which included performances of Pieter Wispelwey (cellist) and Piers Lane (pianist) each broadcast direct nationwide. *Mostly Mozart*, a series of orchestral concerts with young and emerging musicians performing concerto repertoire is presented in association with Orchestra Victoria and Australian National Academy of Music, while *Australian Voices* celebrates our musical heritage and is presented with our ANAM colleagues. An exhilarating performance of *St Matthew Passion* by JS Bach brought together the combined forces of The Consort of Melbourne, The Choir of Trinity Grammar Melbourne, Ensemble Gombert and Ironwood Chamber Orchestra under the direction of Jeremy Summerly. Our first children's festival, *MusicPlay* filled the hall for three days in January with children playing and listening to quality musical events designed to suit their age and interests.

Many ensembles have partnered with MRC to present their concert series in 2010–11 including Ensemble Liaison, Consort of Melbourne, Benaud Trio, Latitude 37, La Compañía, Firebird Trio and Tinalley String Quartet. It was wonderful to hear the sounds of members of the Berlin Philharmonic Orchestra when the Scharoun Ensemble performed here while on tour with the Orchestra in November.

The partnership between MRC and Radio National's Music Deli has brought music from all parts of the world to the Centre, while folk blues artists including Eric Bibb and Ruthie Foster, the unique vocal group Naturally 7, Joanna Newsom and Martha Wainwright all played to capacity houses.



THOMAS BARTLETT (PERFORMING WITH MARTHA WAINWRIGHT)



TAIKOZ



Educational and community groups have also been well represented at MRC during the year including National Boys Choir, Melbourne Girls Grammar School, Australian National Academy of Music, Victorian College of the Arts, University of Melbourne Chamber Orchestra and the Victoria Welsh Choir.

The staff of MRC is a professional, enthusiastic and committed group of people who ensure that every aspect of our artists' and patrons' experience at MRC is positive. I am pleased to welcome Sandra Robertson, Director of Development, Robert Murray, Director of Marketing and Customer Relations, who join Kirsten Siddle, Director of Programming and Presenter Services and Peter McCoy, Director of Corporate Services as MRC's senior management team. To them, I extend my thanks for their enormous contribution in making this year a success. The Board of Directors under the Chairmanship of Kathryn Fagg has provided strong guidance and support and I thank each current member and those retiring directors – Mary Waldron, Matt Zema and Bill McHarg – for their contribution to MRC over many years.

We look forward to celebrating another year of great music with *all* our partners, and thank them for their contribution to this past year.



A handwritten signature in black ink, which appears to read 'Mary Valentine'.

Mary Valentine AO  
Chief Executive Officer

.....

*“I would attend concerts at the MRC at least once a week on average, and I love coming in – the front-of-house staff are welcoming and friendly, there’s a cornucopia of wonderful music of all sorts on offer, and it’s great to be able to hear young, up-and-coming musicians as well as local and international stars. Keep up the great work.”*

.....

RICHARD GUBBINS, YOUNG ARTIST SUPPORTER  
AND AUDIENCE MEMBER



SOWETO GOSPEL CHOIR, DAME ELISABETH MURDOCH'S 102ND BIRTHDAY CELEBRATION

# OUR OPERATIONS

THROUGH 2010–11 MRC FOCUSED ON ITS FIVE BOLD ASPIRATIONS TO GUIDE THE COMPANY'S DEVELOPMENT AND SUPPORT ITS VISION.

We strengthened relationships with local ensembles, forged new partnerships with external promoters and live music presenters, and broadened our marketing initiatives to reach new audiences. We reviewed our services to hirers and refreshed our service excellence ambitions. We also developed our sustainability program to reduce our impact on the environment and ensure our operations were as resource-efficient as possible. Our programs grew and we launched major new programs including MusicPlay children's festival, Great Performers international recital series, a series of concerts exploring the works of Australian composers called Australian

Voices, as well as musical theatre presentations and collaborations with the Melbourne Film Festival, Comedy Festival and Arts Festival.

The Elisabeth Murdoch Creative Development Fund was launched and we celebrated both the Centre's and our patron's birthday with a concert showcasing some of Melbourne's most talented musicians. Our hiring activities were expanded upon and we sought to maximise the venue's utilisation across the range of our operations.

.....  
*"Displaying impeccable timing and musical flare, the quintet's accomplished musical dexterity and striking original compositions added immensely to this already remarkable viewing experience..."*  
.....

(BLUE GRASSY KNOLL),  
RICHARD WATTS, ARTSHUB,  
9 AUGUST 2010



BLUE GRASSY KNOLL

# HIGHLIGHTS OF OUR PROGRAM

## CLASSICAL PROGRAMS

Fostering and supporting Melbourne's home-grown talent is one of the most important roles of the MRC, and in the past year we have sought out as many opportunities as possible to present these immensely talented classical musicians in performance to support their development as artists and introduce new audiences to them.

We continued to present subscription series with a number of Melbourne's finest ensembles. These local heroes included the ever-popular Benaud Trio, innovative vocal ensemble Aria Co, expert advocates of the Renaissance tradition La Compañia, the dynamic Firebird Trio, Melbourne's only professional vocal ensemble The Consort of Melbourne and Ensemble Liaison and their special guest artists. We also added a number of new ensembles to our classical mix including Baroque specialists Latitude 37, violin and piano duo Duo Chamber Melange, exciting and innovative new ensemble Melbourne Art Song Collective, Melbourne favourites Tinalley String Quartet, as well as the popular Trio Anima Mundi and national ensemble Seraphim Trio.

Other Melbourne musicians were featured in dedicated concert presentations, including The Sutherland Trio, Chris Howlett and Hoang Pham, Duo Sol, Speak Percussion, Golden Fur, Emerald Hill String Quartet and Amir Farid and Zoë Knighton. Interstate Australian artists were also well represented including Nick Parnell and Karin Schaupp.

International classical stars also graced our stages once again with the launch of MRC's international flagship recital series, *Great Performers 2011*. In its inaugural season it was spearheaded by renowned cellist Pieter Wispelwey performing a riveting program of Bach and Britten cello suites. Other great international artists and ensembles included Ronald Farren-Price, Roger Woodward, Paul Lewis, Li-Wei, Philippe Bianconi, Jean-Yves Thibaudet, Thomas Adès, Concerto Copenhagen and the Brentano String Quartet.

MRC's production of Bach's *St Matthew Passion* on Psalm Sunday was a mammoth undertaking. This was the first staging of the work with period instruments and performance practice in Elisabeth Murdoch Hall. English conductor and director, Jeremy Summerly, drew together musicians from Ironwood Chamber Ensemble as well as a chorus made up from The Consort of Melbourne, The Choir of Trinity College Melbourne, Ensemble Gombert and distinguished Melbourne soloists including Peter Tregear, Siobahn Stagg and Michael Leighton Jones.

.....  
.....  
*“What a treat to hear each note of Handel’s beautiful music sung so well in the fine acoustic of the Elisabeth Murdoch Hall.”*  
*(Victorian Opera: Julius Caesar)*  
.....  
.....

JOHN HAY-MACKENZIE,  
HERALD SUN, JULY 2010

.....  
.....  
*“I think it’s wonderful that the Recital Centre has performances that are family friendly.”*  
.....  
.....

MUSICPLAY  
PARTICIPANT

.....  
.....  
*“What a fantastic hall. Wonderful acoustic, pianos, atmosphere, and wonderful staff backstage too.”*  
.....  
.....

PAUL LEWIS (PIANO)

## HIGHLIGHTS OF OUR PROGRAM (CONTINUED)

One of the artistic highlights of the year was MRC's presentation of the Scharoun Ensemble Berlin. Made up of members of the Berlin Philharmonic Orchestra, they presented their only Australian concert in Elisabeth Murdoch Hall with an incredible performance of Mozart's Quintet for Horn and Strings, Beethoven's Septet in E-flat and a work by Australia's Brett Dean. The performance was outstanding and was nominated for a Helpmann award.

Other new music highlights included concerts by Quiver, Golden Fur, Speak Percussion and Ensemble Liaison, featuring works by contemporary composers such as James Rushford, Elena Kats-Chernin, David Chisholm, Luke Paulding, Liza Lim, and newly commissioned works by MRC and The Consort of Melbourne by Joseph Twist.

Our classical music programs were complemented throughout the year by the superb programs of our presenting partners, including the varied series presented by Musica Viva, Melbourne Symphony Orchestra's NAB Recital Centre series, Melbourne Chamber Orchestra, Australian Brandenburg Orchestra, Australian String Quartet, Impressaria and Victorian Opera.

### CONTEMPORARY PROGRAMS

#### OVER THE YEAR MELBOURNE RECITAL CENTRE BROADENED ITS PROGRAM OFFERINGS, PARTICULARLY IN CONTEMPORARY GENRES.

This included dynamic programming within the genres of jazz and world music, folk, cabaret, songwriters and many contemporary programs that cross different genres and traditions. The response from audiences has been outstanding with strong ticket sales and a more diverse representation of Melbournians among our audience.

MRC continued its support of the Melbourne International Jazz Festival in June with phenomenal performances by a great line-up of local and international stars including the Ron Carter Trio, Norma Winstone, Kurst Rosenwinkel and trumpeter Chris Botti.

Blue Grassy Knoll fans returned to MRC during the Melbourne Film Festival for an Australian premiere of the ensemble's score to the earliest complete film from China *Labourer's Love* and the world premiere of the ensemble's score to Buster Keaton's *The General*.

Other jazz highlights included an outstanding Australian exclusive performance by Chucho Valdes and the Afro-Cuban Messengers, dynamic performances by jazz trumpeter Tomasz Stańko as well as bassist Richard Bona. Australian jazz artists were well represented with performances by Joe Chindamo, Manins, Gould, Jones Trio, Australian Art Orchestra (including a world premiere of *Soak* and the Australian premiere of *The Hollow Air*) and the Luke Howard Trio.

World and crossover artists continued to merge the distinctions between musical genres, when MRC presented incredible performances by legendary guitarist Eric Bibb and the endearing singer Ruthie Foster, haunting melodies and harmonies with Irish roots from Colm Mac Con Iomaire, magical Mediterranean sounds from Greek ensemble En Chordais and some gypsy fun from violinist Roby Lakatos.

The popularity of cabaret programs in the Salon continued to grow with performances by French chanteuse Belle du Berry, an inspirational program from Barb Jungr showcasing her new American Songbook, a season of Jacques Brel by Belgian artist Micheline van Hautem and the return of the inimitable Caroline Nin.



BELLE DU BERRY

.....  
.....  
*"Thanks to everyone for making this week a truly unique experience for us."*  
.....  
.....

BELLE DU BERRY

.....  
.....  
*"She is an artist whose extraordinary vocal technique allows her limitless creativity. Sophisticated, mature and inspiring music making."*  
.....  
.....

(KATIE NOONAN) ANNA MCALISTER,  
HERALD SUN, 26 OCT 2010

A number of star singer-songwriters appeared on the stage of Elisabeth Murdoch Hall during the year. Joanna Newsom's unique and beguiling mix of vocals, harp and storytelling brought an ethereal quality to the Hall for two performances while Canadian superstar Martha Wainwright brought a program of Piaf and a homage to her late mother Kate McGarrigal for two sold out and outstanding performances.

MRC's partnership with Multicultural Arts Victoria and ABC's Music Deli continued throughout the year with four venue-wide mini festivals of music making from around the globe. Programs included a showcase of great Australian song featuring Mark Seymour, Danny Spooner and Jen Cloher; a Greek festival featuring Xylouris Ensemble; and an Italian program featuring Banditaliana. These mini-festivals were characterised by a family-friendly atmosphere, free entertainment in the foyers and infectiously joyous music making.

#### CHILDREN'S & EDUCATION PROGRAMS

### THE HIGHLIGHT OF THE PAST YEAR IN OUR CHILDREN'S & EDUCATION PROGRAMS WAS THE SUCCESS OF OUR INAUGURAL MUSIC FESTIVAL FOR CHILDREN, *MUSICPLAY*.

Held in the January school holidays, *MusicPlay* aimed to make the experience of high quality music more accessible to young people and their families. The festival program was developed to be entertaining, fun and interactive with a focus on music's contribution to children's development.

The festival program featured concerts for babies, called *Classical Babes*. These concerts were the result of a unique collaboration between children's music educators, Mini Maestros, and Melbourne ensemble, The Sutherland Trio. The festival also saw performances by Brisbane-based Nadia Sunde, The Mudcakes, Cha Cha Sam and a whole host of workshops in singing, drumming and kazoo. *Carnival of the Animals* was performed in Elisabeth Murdoch Hall with original animations created by students at RMIT University. There was also free entertainment in the foyer with roving musicians and an interactive musical installation of giant red megaphones dotted throughout the precinct.

Regular children's school holiday programs have now been established and the Salon is fast becoming a favoured destination for parents with pre-school and primary aged children seeking quality interactive musical experiences. Larger scale children's events have also been programmed.

Elisabeth Murdoch Hall is home to some of MRC's most ambitious children's productions including Poulenc's delightful *Babar the Elephant* where the music was brought to life with an edited version of the gorgeous movie.

MRC's second annual Bach Competition for Victorian children aged up to 17 years, sponsored by MRC Board Director Richard Mills AM, was held in March. First prize was awarded to Michael Byrne while the encouragement award was awarded to Justine Ayers and Emily Sheppard. We thank our esteemed judging panel Richard Mills AM, Caroline Almonte and Helen Ayres for their assistance with this competition and commend all the young artists who performed so brilliantly for the appreciative audience.

Many of the MRC's life-long learning opportunities have taken the form of interviews and explorations of music, artists and ensembles. Audiences have had the opportunity to 'dig deeper' through a range of pre-concert talks for selected programs.

Regular master classes leveraged the visits from some of the world's best musicians to benefit students from the University of Melbourne, Australian National Academy of Music and high school students. The highlight of the year was a master class held by piano virtuoso Lang Lang and supported by The Langham Melbourne. Promising Melbourne students and past winners of MRC's Bach Competition were given the opportunity to perform for Lang Lang while he generously provided insightful advice on opportunities for development.

MRC also once again supported the VCE Top Class program. This year we hosted 12 performances by Top Class students across dance, drama, theatre studies, music performance and sound. It was thrilling to be able to showcase Victoria's young talent across the performing arts and we are honoured to be able to play this role in their development.

Regular tours of the MRC continued to be popular among visitors, who were able to learn more about the architecture, acoustics and operations of a busy concert venue. MRC also participated in Melbourne Open House, opening its doors to allow the public to explore freely while also having the opportunity to hear talks from the building's architects (ARM), acoustic engineers (ARUP), presenting partner Victorian Opera and to experience special technical tours.



MELBOURNE RECITAL CENTRE



VCE TOP CLASS



GUESTS OF SHARE THE MUSIC – ADULTS PROGRAM



MARK SEYMOUR



DRUMMING WORKSHOP, MUSICPLAY



LEVEL 1 FOYER, MELBOURNE RECITAL CENTRE



MARTHA WAINWRIGHT



LANG LANG IN MASTERCLASS



BLACKBIRDS



COMBINED ACCORDION ORCHESTRA

# A YEAR OF MUSIC MAKING

- Adès & Calder Quartet  
Albare  
Alexander Gavrylyuk  
Alina Ibragimova & Cedric Tiberghien  
An Enchanted Spring Evening  
ANAM & Simone Young  
Australian Voices –  
Arthur Benjamin & Timothy Young  
Australian Voices – Margaret  
Sutherland & Anna Goldsworthy  
Australian Voices – Peggy Glanville-  
Hicks & Marshall McGuire  
Australian Voices – Richard  
Meale & Paul Dean  
Andrea Keller Quartet with Strings  
Andreas Scholl  
Argentinean Celebrations with  
Zoë Knighton and Amir Farid  
Aria Co – The End of the Line –  
Mahler, Berg, Ligeti & Rihm  
Aria Co & Quiver  
Atos Trio  
Australian Art Orchestra –  
Soak & Hollow Air  
Australian Brandenburg  
Orchestra – Amore Italiano  
Australian Brandenburg  
Orchestra – Baroque Tarantella  
Australian Brandenburg  
Orchestra – Handel Coronation  
Australian Brandenburg  
Orchestra – Haunting Handel  
Australian National Piano  
Award Winner's Concert  
Australian String Quartet – Cypressess  
Australian String Quartet –  
Shaker Dances  
Australian String Quartet – Unity  
Babar the Elephant  
MRC's Bach Competition  
Band of Brothers – Grigoryan &  
Tawadros Brothers  
Barb Jungr – The Men I Love  
Belle du Berry  
Benaud Trio – Bohemian Rhapsody  
Benaud Trio – Café Music  
Benaud Trio – From Russia with Love  
Benaud Trio – Majesty  
Blue Grassy Knoll – Buster Keaton's  
'Our Hospitality'  
Blue Grassy Knoll – The General  
Blue Grassy Knoll – Three Short  
Comedies  
Brentano String Quartet  
Calder Quartet  
Carducci String Quartet  
Caroline Nin – Hymne à Piaf  
Chamber Melange – A Life In Music  
Chris Botti  
Chris Howlett & Hoang Pham  
Christ Church Grammar  
School Concert  
Christian Badea Conducts the  
University of Melbourne  
Christmas with the Chamber  
Orchestra at St Paul's  
Chucho Valdes & the  
Afro-Cuban Messengers  
Concerto Copenhagen &  
Genevieve Lacey  
The Consort of Melbourne  
– A Renaissance Christmas  
David Helfgott in Recital  
David Hobson with the Victoria  
Welsh Choir  
David Jones – Energ through Matter  
David Scheel – Don't Shoot Me,  
I'm Only the Piano Player  
DBR & DJ Scientific with  
Emeline Michel  
Duo Chamber Melange with  
Shu-Cheen Yu  
Duo Sol  
Duo Sol: Beethoven plus Greenbaum  
Duo Tristaino Watty – Modern Masters  
Eggner Trio  
Emerald Hill String Quartet  
En Chordais  
Ensemble Liaison  
Ensemble Liaison & David Jones  
Ensemble Liaison &  
Henning Kraggerud  
Ensemble Liaison & Ray Chen  
Eric Bibb / Ruthie Foster  
Eva Ayllon in Australia –  
ADream Come True  
Finbar Furey with Brendan Grace  
Firebird Trio – Gypsy In My Soul  
Firebird Trio – Salute the Duke  
Flood Relief Concert  
Freshwater Trio –  
Scenes from Childhood  
Golden Fur –  
Control and Abandon  
Golden Fur – Evaporation  
Pieter Wispelwey  
Grigoryan Brothers &  
Wolfgang Muthspiel  
Gwilym Simcock  
Herald Sun Aria Final 2010  
Hopkins Qartet – Haydn  
and Shostakovich  
Hopkins Quartet –  
Schubert, Marcellino and Brahms  
Hush CD Launch  
Jack de Johnette: Jack Johnson –  
Soundtrack to a Legend  
Jazz Futures  
Joanna Newsom  
Johann Strauss Ensemble  
Joy to the World – A Christmas  
Celebration  
Victorian Opera – Julius Caesar  
Katie Noonan & Karin Schaupp  
Konrad Dorecki Recital  
La Compañía – Civilization:  
The Duchy of Burgundy  
La Compañía – Discovery:  
The Portugese Empire  
La Compañía – Music for a  
Bavarian Duke  
Lang Lang Master class  
Latitude 37  
Latitude 37 – From the Highest  
Spheres  
Lee Konitz with special  
guest Kurt Rosenwinkel  
Li-Wei Qin Recital  
Luke Howard Trio  
Magical Musical Melbourne  
Manins, Gould, Jones Trio  
Martha Wainwright Sings Piaf  
MASC – Nobles et  
Sentimentales: A Ravel Portrait  
Massimo Scattolin & Friends  
Massimo Scattolin & Jo Beaumont  
Melbourne Chamber Orchestra –  
Airs and Graces



Melbourne Chamber Orchestra – Blaze

Melbourne Chamber Orchestra – Desire

Melbourne Chamber Orchestra – That’s Amore

Melbourne Chamber Orchestra – The Art of Mozart

Melbourne Chamber Orchestra – Wildflower

Melbourne Festival of Choirs

Melbourne Girls Grammar School Concert

Melbourne Open House

Melbourne Symphony Orchestra – Ears Wide Open

Melbourne Symphony Orchestra – French Connections

Melbourne Symphony Orchestra – Labadie Conducts Bach

Melbourne Symphony Orchestra – Messiah

Melbourne Symphony Orchestra – Mozart and Schubert Favourites

Melbourne Symphony Orchestra – Musical Fireworks

Melbourne Symphony Orchestra – The Beethoven Concertos: The Journey Continues

Micheline Van Hautem – The Music of Jacques Brel

Mostly Mozart #1

Mostly Mozart #2

Mowbray College

Music Deli – Bandataliana

Music Deli – Songs of Australia

Music Deli – Goes Greek!

Music Deli – Tapestry

Carnival of the Animals

Cha Cha Sam

Classical Babes

Nadia Sunde

The Mudcakes

Kazoo Fun Workshop

African Drumming Workshop

National Boys Choral Institute Concert

Naturally 7

Nefes Ensemble

Nick Parnell – Bach to Brazil

Nick Tsiavos – Liminal

Norma Winstone / Kurt Rosenwinkel

Opera Australia Chorus in Concert

Our Lady of Mercy College Centenary Concert

Pandit Rajendra Prasanna & Friends

Paul Høxbro & Genevieve Lacy

Paul Lewis

Pavel Haas Quartet

Philippe Bianconi

The Raah Project

Raga Dolls Salon Orchestra Concert

Roby Lakatos and his Ensemble

Roger Woodward Chopin Gala Recital

Ron Carter Trio

Ronald Farren Price 80th Birthday Recital

Royal Melbourne Philharmonic – Mozart Chamber Works

Royal Melbourne Philharmonic – Mozart Requiem

Scharoun Ensemble Berlin

Seraphim Trio – The Wanderer

David Hobson & Yvonne Kenny – Singing for Love

Sondheim Triptych – Anyone Can Whistle

Sondheim Triptych – Merrily We Roll Along

Sondheim Triptych – Saturday Night

Songs for Peter: A Britten

Pears Centenary Concert

Speak Percussion

Speak Percussion – 20th Anniversary Concert

St Matthew Passion

St Michael’s Grammar School

Streeton Trio Recital

Katie Noonan

Sydney Chamber Choir

Syzygy Ensemble – Invitation to Voyage

TaikOz

Taylor Mac

The Australian Voices – The Ones with Blood of Stone

Karin Schaupp & Trinity College Choir Melbourne – The Butterfly & The Phoenix

The Choir of Trinity College Cambridge

The Consort of Melbourne – Victoria with a Twist

The Consort of Melbourne – Victoria with a Twist #2

Colm Mac Con Iomaire

Raga Dolls: Salon Orchestra

Pictures of Alma

The Richard Bona Group

The Romantic Project – Joe Chindamo Trio

The Snowman with Orchestra Victoria

The Sutherland Trio – Sutherland by Night

The University of Melbourne Chamber Orchestra

The Victorian Collaborative Artists Showcase

The Wesley College Samuel Alexander Lecture 2010

Thomas Adès & Melbourne Symphony Orchestra

Thymophthalein

Tinalley String Quartet – Extraordinary Beginnings

Tinalley String Quartet

Tinalley String Quartet – Brave New World

Tomasz Stańko Quintet

Trio Anima Mundi – Noble Connections

Tweet and Boom – Per Forsberg, Hallfríður Ólafsdóttir & Rosa Scaffidi

VCE Top Class: Dance

VCE Top Class: Drama & Theatre Studies

VCE Top Class: Music Performance Group and Solo

VCE Top Class: Sound

Victoria Welsh Choir – Grand Annual

St David’s Day Concert

Wesley College School Concert

Wind Energy

With One Voice – Melbourne’s Biggest Sing!

Young Voices of Melbourne – 20th Anniversary Celebration Concert

# RECORDING, BROADCASTING AND TECHNOLOGICAL HIGHLIGHTS

THE INTIMACY AND WARMTH OF THE BEAUTIFUL SALON IS AN EXQUISITE PLACE FOR MUSIC MAKING AND IS PERFECT FOR RECORDING MUSIC.

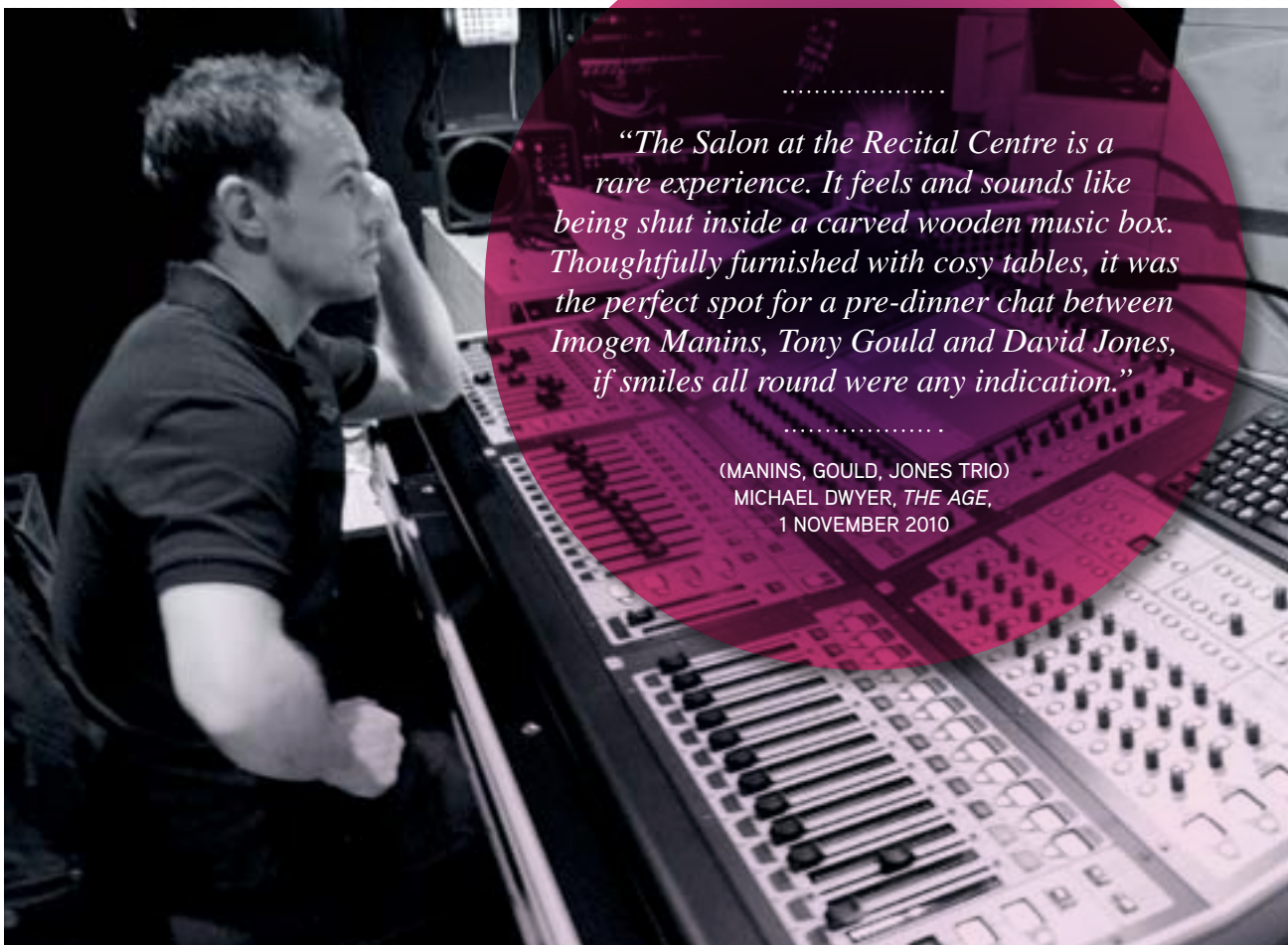
Over the past year MRC's recording studio usage has been increased to further maximise the benefit to artists of this special venue. The Salon Recording Studio facilitates a range of recording needs for a number of clients, from jazz to classical ensembles, film scores and corporate events.

As well as the recording studio operations, recording for broadcast forms an integral part of MRC's daily operations. Prior to the Centre's opening, MRC created partnerships with radio stations ABC Classic FM and 3MBS, allowing each to work with MRC's technical team to create high quality recordings for direct or delayed broadcast on radio. Over the past year these partnerships have continued to flourish and the MRC has facilitated 81 recordings for radio broadcast on these stations.

In addition to these broadcast partners, MRC has also worked with a range of other radio and television broadcasters, including 3RRR, PBS, SBS and Channel 10, to widen the audience for its programs.

MRC's broadcast partnerships extend the reach of the Centre across Melbourne and Victoria, as well as nationally and internationally, to audience numbers of well over 250,000 Australians per performance broadcast.

The technical facilities at MRC have facilitated a range of value-adding initiatives over the past year. Audio and audio-visual content creation have become areas of focus to encourage audiences to explore the work of MRC's artists in greater depth.



.....  
*“The Salon at the Recital Centre is a rare experience. It feels and sounds like being shut inside a carved wooden music box. Thoughtfully furnished with cosy tables, it was the perfect spot for a pre-dinner chat between Imogen Manins, Tony Gould and David Jones, if smiles all round were any indication.”*  
.....

(MANINS, GOULD, JONES TRIO)  
MICHAEL DWYER, *THE AGE*,  
1 NOVEMBER 2010

TOM OLIVER, MRC TECHNICIAN

# SUPPORT SERVICES AND OPERATIONS

SUPPORT SERVICES AND OPERATIONS UNDERPIN THE SUCCESSFUL DELIVERY OF A VARIETY OF PROGRAMS, EVENTS AND FUNCTIONS IN THE CENTRE.

The following table presents a summary of the key support objectives and achievements for the year.

	OBJECTIVES	ACHIEVEMENTS
<b>Marketing Achievements</b>	Extend our audience in both depth and reach and achieving greater ticket sales	Achieved audience attendance number of over 133,891 at 320 performances. An increase of 37,000 people on previous year. An increase of over \$1.6M in value of tickets on previous year. Grew Customer Database from 28,689 to 47,009 (+40%) in financial year 10/11. Increased email and digital marketing initiatives
	Better understand and better communicate with both our existing and emerging new customers. Complete third Mosaic research and complete second focus groups research	Undertook research into needs and opinions of Melbourne Recital Centre's customers
	Develop subscription series sales campaigns, including Great Performers subscription campaign	Launched Great Performers 2011, Mostly Mozart and Local Ensembles subscription series
	Review MRC branding	Undertook evaluation of MRC Brand, ongoing optimisation
<b>Information Technology</b>	Develop Artifax (venue management system) capabilities	Additional 'marketing & box office' module configured and implemented
	Integrate Artifax and Tessitura (ticketing & CRM system)	Link created between the two systems to increase efficiency of event planning
	Develop Asset Register	HardCat configured and further developed
<b>Retail Operations</b>	Develop and fund Tapas Bar	Tapas Bar operations successfully tendered. Tapas Bar development funded, designed and building contract tendered
	Expand our box office service to provide off-site ticketing to existing artistic hirers and collaborators	Offsite ticketing services provided to a range of clients
<b>Commercial and Corporate Venue Hiring</b>	Increase hiring activity in corporate & private areas	Corporate & private hiring revenue was increased
	Increase the frequency of hiring amongst current hiring clients	Frequency was increased amongst some regular clients
	Develop marketing campaign to market and promote our corporate hiring offer	Partially developed and implemented, further development planned in 2011-12
<b>Organisational Development</b>	Review Organisational structure	Changes to organisational structure enacted to increase efficiency and effectiveness. New director positions established to increase organisational capabilities.
	Continue staff training in technical and skills development	Training and professional development continues in accordance with individual performance development plans
	Review our OH&S policies and procedures	Audit completed and procedures updated
	Review our Emergency Management procedures	Audit completed, procedures updated, training completed and ongoing
	Initiate Service Excellence training program for all staff	Service Excellence program is in development
<b>Building &amp; Technical</b>	Monitor & contain building costs	Improved efficiencies created in energy consumption and waste management
	Asset register developed	Asset register further developed to manage maintenance
	Finalise defecting process	Building defects completed
	Develop technical systems in Salon and foyer	Equipment configuration revised for efficient operation
	Review broadcast systems and procedures	Broadcasting capabilities further developed for increased ease of recording & broadcasting
	Audio and video recording capabilities developed	Recording studio model refined. Further equipment purchased
	Develop and implement a five-year asset strategy	Draft completed

# OUR BUSINESS PARTNERS & KEY DONORS

Melbourne Recital Centre's diverse program with its many artistic highlights and emphasis on outreach to new audiences are the hallmarks of the 2010-11 season. Our Business and Philanthropic partners have played an essential role in bringing Melbourne Recital Centre to life as Melbourne's place for music and enabling this stunning venue to be filled with the joy and creativity of music-making.

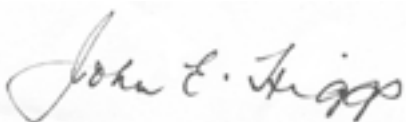
The foresight and generosity of the Kantor and Calvert-Jones families whose contributions established the MRC Endowment Fund have been acknowledged previously but warrant special mention again here. The endowment forms the solid bedrock from which the Centre has been able to flourish enabling the development of a vast array of performances, events and capacity building programs.

Led by Principal Partner Audi Australia, MRC's business partners were again a cornerstone of our success. We are proud of our association and thank Etihad Airways, Art Series Hotels including The Blackman, Bang & Olufsen, JCDecaux and Yarra Yering for their support.

Philanthropic support enabled a range of outreach and artist development activities such as music competitions, children's concerts and performances by young ensembles and artists, many of whom were making their MRC debut. We are very grateful to our many generous benefactors as without their support these enriching activities would not have been possible.

2010-11 also saw the expansion of our *Share the Music* program which enabled us to invite disadvantaged adults as well as children to attend performances at MRC and experience quality live music. This year, 248 donors made possible visits by children from five regional Victorian schools and adult clients of Wintringham Housing and Wombat Housing and Support Services. Their stories and their response to these opportunities were humbling. We thank our supporters for ensuring this worthwhile program is now firmly fixed in MRC's annual calendar.

Thanks to all of our marvellous supporters who contributed so strongly to the MRC's success this year. Together our family of benefactors ensures that MRC is not only an architectural showcase for Melbourne but also its favoured place for music.



**John Higgs**  
Chair  
Fundraising & Sponsorship Committee

## PRINCIPAL GOVERNMENT PARTNER

**ARTS  
VICTORIA**



## PRINCIPAL PARTNER



Audi

## INTERNATIONAL AIRLINE PARTNER



## PROGRAM PARTNERS

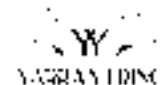


ABC  
Classic FM  
abc.net.au/classic

## OUR PARTNERS



BANG & OLUFSEN



## PHILANTHROPIC SUPPORTERS

The Kantor Family

Eddingford Pty Ltd

The Calvert-Jones Family

William J. Forrest AM

The Robert Salzer  
Foundation

Richard Gubbins

Helen Macpherson  
Smith Trust

Hans and Petra Henkell

Lyn Williams AM

Helen Imber

The Hugh D.T. Williamson  
Foundation

Ann Lahore

Richard Mills AM

Annamila Pty Ltd

Joy Selby Smith

.....  
*"Audi Australia is proud  
to be associated with MRC  
which, in its sphere, promotes the  
brand values of progressiveness,  
sophistication and innovation  
that we hold so dear."*  
.....

UWE HAGEN, MANAGING DIRECTOR,  
AUDI AUSTRALIA

# OUR PRESENTING PARTNERS & ASSOCIATES

MELBOURNE RECITAL CENTRE VALUES THE CONTRIBUTION OF OUR PRESENTING PARTNERS AND ASSOCIATES IN DELIVERING AN IMPRESSIVE RANGE OF HIGH QUALITY MUSICAL EXPERIENCES TO MELBOURNE AUDIENCES.

The team at MRC is honoured to play a part in facilitating these wonderful concerts and we celebrate their success.

- |   |  |   |
|---|--|---|
| 3MBS FM                                       | Firebird Trio                          | Orchestra Victoria  |
| ABC Classic FM                                | Freshwater Trio                        | Our Lady of Mercy College   |
| Australian National Academy of Music          | Gaynor Crawford Presents               | Royal Melbourne Hospital Foundation   |
| Andrew McKinnon                               | Golden Fur                             | Royal Melbourne Philharmonic  |
| Aria Co                                       | Hopkins Quartet                        | Seraphim Trio   |
| Australasian World Music Expo                 | Impressaria                            | St Michael's Grammar School   |
| Australian Art Orchestra                      | Jo Beaumont                            | Terrasphere Productions   |
| Australian Boys Choral Institute              | La Compañía                            | The Australian Voices   |
| Australian Brandenburg Orchestra              | Magnormos                              | The CHOIR   |
| Australian Pop Choirs                         | Manins, Gould, Jones Trio              | The Consort of Melbourne  |
| Australian String Quartet                     | Melbourne Chamber Orchestra            | The Herald and Weekly Times   |
| Australian Youth Orchestra                    | Melbourne Arts Festival                | The Hush Foundation   |
| Benaud Trio                                   | Melbourne Girls Grammar School         | The University of Tasmania,<br>Music Department                               |
| Blue Grassy Knoll                             | Melbourne High School                  | Tinalley String Quartet   |
| Chamber Music Australia                       | Melbourne International Jazz Festival  | University of Melbourne   |
| City of Melbourne, Melbourne<br>Conversations | Melbourne Symphony Orchestra<br>Chorus | Victoria Welsh Choir  |
| Creative Universe                             | Monash University                      | Victorian Curriculum &<br>Assessment Authority –<br>Top Class Performing Arts |
| Down Under Concert Direction                  | Mowbray College                        | Victorian Opera   |
| Duo Sol                                       | Musica Viva Australia                  | Wesley College  |
| Ensemble Liaison                              | National Boys Choir of Australia       | Young Voices of Melbourne   |
| Federicao Echevarria                          | Nicholas Jones                         |   |

.....

*“As Melbourne Recital Centre’s international airline partner, we are pleased to bring international artists of the highest calibre to Melbourne to perform at this world-class venue.”*

.....

LINDSAY WHITE, COUNTRY MANAGER,  
AUSTRALIA & NEW ZEALAND,  
ETIHAD AIRWAYS

.....

*“The service that you and your staff provide has been amazing and all of our tutors that have come to your facility have raved about the attention they receive from all of your staff members...”*

.....

MICHAEL SIEDERS,  
NIDA (NATIONAL INSTITUTE  
OF DRAMATIC ART)



LE VOCE DELLA LUNA



TABURA - WEST PAPUAN MUSIC AND DANCE



AUDI AUSTRALIA GUESTS AT TAIKOS



CLAUDIO CARBONI, BANDITALIANA



WAYNE SIMMONS BAND



AUDIENCE MEMBERS OF COMBINED ACCORDION ORCHESTRA



JENNY M THOMAS, SONGS OF AUSTRALIA



NADIA SUNDE, MUSICPLAY



SHARE THE MUSIC CHILDREN'S PROGRAM



ELISABETH MURDOCH HALL



WINTRINGHAM HOUSING, GUESTS OF THE SHARE THE MUSIC - ADULTS PROGRAM

# OUR PEOPLE

## PATRON



DAME ELISABETH MURDOCH  
AC DBE

## BOARD OF DIRECTORS



KATHRYN FAGG



TOM BONVINO



HON MARY DELAHUNTY



JOHN HIGGS



JULIE KANTOR



RICHARD MILLS AM



HAROLD MITCHELL AC

### KATHRYN FAGG

*CHAIR (from 20th September 2010)*

President Corporate Development, Linfox Logistics; Former President FMCG Asia Pacific, Linfox Logistics. Former President, Asia, BlueScope Steel; Former Managing Director, Banking Products ANZ; Former Chairman, Parks Victoria.

### TOM BONVINO

CEO and Managing Director, Private Branded Beverages Ltd; Fellow, Australian Institute of Company Directors; Non-Executive Director, Genetic Technologies Ltd; Former Vice-President, Italian Chamber of Commerce.

### HON MARY DELAHUNTY

National Director and CEO, Writing Australia Ltd; Chair, Orchestra Victoria; Director, Centre for Advanced Journalism, The University of Melbourne; Director, Harold Mitchell Foundation; Director, Elisabeth Murdoch Sculpture Foundation; Consultant; Founder, Rosebank Artists' Retreat; Former Victorian Government Minister for Education, Planning and the Arts; Journalist; Author.

### JOHN HIGGS

Trustee, Bendigo Art Gallery Foundation; Chairman, Advisory Board, La Trobe Visual Arts Centre; Co-Founder and Founding Chair, Girton Grammar School; Former President, Bendigo Art Gallery; Former member, Council of Bendigo College of Education; Former member, Academic Staff, La Trobe University.

### JULIE KANTOR

Director, Annamila Pty. Ltd; Director, Dara Foundation; Director, McClelland Gallery & Sculpture Park; Board member, State Library of Victoria Foundation.

### RICHARD MILLS AM

Artistic Director designate, Victorian Opera; Artistic Director, West Australian Opera; Former Director, Australian Music Project for the Tasmanian Symphony Orchestra; Composer; Conductor.

### HAROLD MITCHELL AC

Executive Chairman, Mitchell Communications Group; Executive Chairman, Aegis Media Pacific; Chair, Australian Government Review of Private Sector Support for the Arts; Chairman, CARE Australia; Chairman, Melbourne Symphony Orchestra; Chairman, ThoroughVision; Chairman and Owner, Melbourne Rebels Rugby Union team; Chairman, TVS, University of Western Sydney; Chairman, Art Exhibitions Australia; Vice President, Tennis Australia; Director, Deakin Foundation; Former Chairman, National Gallery Australia; Former President, Melbourne International Festival of the Arts; Former President, Museums Board of Victoria; Former Board Member, Opera Australia.



### RETIRING DIRECTORS

Bill McHarg (*Term expired 2nd March 2011*)  
Mary Waldron Acting Chair (*Term expired 2nd March 2011*)  
Matt Zema (*Term expired 2nd March 2011*)

### BOARD COMMITTEES

#### GOVERNANCE, AUDIT AND RISK COMMITTEE

Mary Waldron, Chair (*Term expired 2nd March 2011*)  
John Higgs, Chair (*from March 2011*)  
Matt Zema (*Term expired 2nd March 2011*)  
Kathryn Fagg  
Mary Delahunty

#### EXECUTIVE COMMITTEE OF MANAGEMENT

Kathryn Fagg, Chair (*from 20th September 2010*)  
Matt Zema Chair (*term expired 2nd March 2011*)  
Mary Waldron (*term expired 2nd March 2011*)  
Tom Bonvino

Mary Delahunty  
John Higgs  
Julie Kantor  
Bill McHarg (*term expired 2nd March 2011*)  
Richard Mills AM  
Harold Mitchell AC

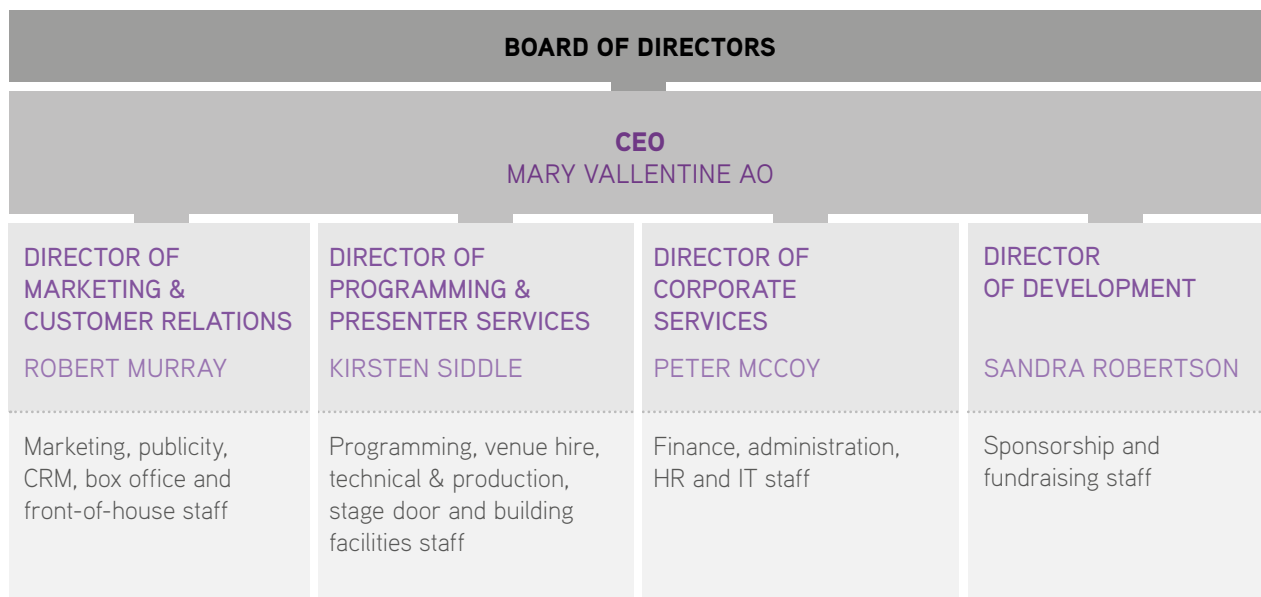
#### MARKETING AND COMMUNICATIONS COMMITTEE

Mary Delahunty, Chair  
Tom Bonvino  
John Higgs  
Bill McHarg (*term expired 2nd March 2011*)

#### FUNDRAISING AND SPONSORSHIP COMMITTEE

John Higgs, Chair  
Julie Kantor  
Bill McHarg (*term expired 2nd March 2011*)  
Harold Mitchell AC

### STAFF STRUCTURE



# ENVIRONMENTAL PERFORMANCE AND OFFICE BASED ENVIRONMENTAL IMPACTS

MELBOURNE RECITAL CENTRE IS COMMITTED TO CREATING AN ENVIRONMENTALLY SUSTAINABLE PERFORMANCE VENUE, WHICH MINIMISES THE ENVIRONMENTAL IMPACTS FROM ALL ASPECTS OF ITS OPERATIONS, FACILITIES AND PROGRAMS.

We aim to use our resources as efficiently as possible, reduce our everyday environmental impacts and promote an environmentally sustainable future for our community.

## ACHIEVEMENTS TO DATE

Melbourne Recital Centre has made a commitment to reducing our environmental impact through adopting an Environment & Sustainability Policy, setting key objectives and developing an Action Plan to achieve our goals. A Sustainability Team has been established to drive continuous improvement in minimising MRC's environmental impacts and implement the Action Plan.

MRC has developed targets for improving environmental performance for waste, energy and water reduction. Recycling waste streams have been established for co-mingled, cardboard, office paper, fluorescent tubes, all other lamps and batteries, printer cartridges and unused mobile phones. Additionally, all general waste is handled in a conscientious manner, and is sent to a Resource Recovery Centre to be recycled wherever possible.

MRC has also worked with Melbourne Theatre Company and Script Bar to minimise environmental impacts by sharing waste removal services. Services and equipment are obtained from environmentally conscious suppliers such as Wanless, Veolia Environmental and Ikon Environmental Services. In the past year hundreds of blown globes have been replaced with lower wattage globes (20% reduction in power consumption) and MRC is trialling LED fittings in key locations (80% reduction in power consumption). Light settings have also been reviewed throughout public areas to minimise power consumption. HVAC (Heating, Ventilation & Air Conditioning) settings throughout the venue have been reviewed to minimise power consumption.

## ENERGY

The data represented below was collected through energy retailer billing information.

INDICATOR	2010-11			
	Electricity kWh (Building)	Electricity (HVAC Chilled Water) <sup>1</sup>	Natural Gas MJ (Building)	Natural Gas MJ (Heating Hot Water) <sup>2</sup>
Total energy usage	709,548	Not available	375,356	688,181
Greenhouse gas emissions (t CO <sub>2</sub> e)	860	Not available	24	45
Percentage of electricity purchased as Green Power	14	14-20	-	-
Units of energy used per capita <sup>3</sup>	5.29	Not available	2.80	5.13

## WATER

INDICATOR	2010-11	
	Water	Sewage
Total units of metered water consumed by usage types (kilolitres)	902	755
Kl Per capita <sup>3</sup>	.006	.005

## PAPER

INDICATOR	2010-11
Total units of copy paper used (reams)	319
Percentage of 50-75% recycled content copy paper purchased (%)	100

<sup>1</sup> MRC shares certain facilities infrastructure with Melbourne Theatre Company, including HVAC chillers. Due to the shared systems, accurate information for chilled water energy use is currently unavailable

<sup>2</sup> Due to the shared system, information for Natural Gas MJ (Heating Hot Water) could only be obtained for 21st December 2010 - 27th June 2011

<sup>3</sup> this only includes audience members and does not include staff or artists

# FINANCIAL SUMMARY

## FOUR YEAR FINANCIAL SUMMARY

	2011	2010	2009	2008
Revenue from Government	4,121,800	3,847,000	5,730,000	6,173,000
Total income from transactions	9,195,755	6,548,400	8,097,224	8,332,015
Total expenses from transactions	8,780,553	6,844,335	7,868,319	2,148,101
Net result from transactions	415,202	(295,935)	233,008	6,183,957
Net results for the period	423,859	(350,617)	228,905	6,183,914
Net results before depreciation	921,439	140,160	447,101	6,213,015
Net cash flow from operating activities	1,523,283	341,340	1,406,919	6,136,533
Total assets	10,596,219	9,630,094	10,088,439	8,486,215
Total Liabilities	2,069,370	1,527,104	1,634,832	261,513

## CURRENT YEAR FINANCIAL REVIEW

### OVERVIEW

As it settled into its normal operating pattern, MRC increased both the number and the diversity of its presentations resulting in higher attendances in 2010–11. The financial result was \$415,202, an improvement of \$711,137 on the previous year. The result before depreciation was a surplus of \$921,439, a reflection not only of an improved operating environment but also to a number of 'one-off' celebrity performances attracting capacity sales.

### FINANCIAL PERFORMANCE AND BUSINESS REVIEW

The net results for the period of \$423,859 compared favorably to the loss of \$350,617 experienced in 2009-10. This result reflects an improved surplus from operations of \$190,183 combined with an improved return on investment of MRC Public Funds of \$225,019 and \$8,657 from sale of assets. An increase of \$2,372,555 in non-government revenue resulted in a reduction in government funding as a percentage of turnover from 58.7% to 44.8% compared with the prior year.

### FINANCIAL POSITION BALANCE SHEET

The company's net assets position was \$8,526,849 at year end. Assets increased by \$966,125 reflecting the MRC'S strong cash position generated from core activities, while liabilities increased by \$542,266 with the creation of provisions for floor repairs as a result of storm damage and for the potential liability for payment of superannuation contributions arising from specific performers' contracts.

### CASH FLOWS

The net cash flow from operating activities was \$1,523,283 which is \$1,181,943 greater than the previous year. This was due primarily to increased ticket sales of \$1,891,075. The net cash flow used investing activities was reduced to \$120,029 as the Centre became fully operational. Cash held at 30 June 2011 was \$6,526,744 compared with \$5,123,781 in 2010, an increase of \$1,402,963.

# STATEMENT OF CORPORATE GOVERNANCE

## MANNER OF ESTABLISHMENT

Melbourne Recital Centre was registered on the 2 March 2006 with the sole member being the State of Victoria, represented by the Minister for the Arts. The Directors of Melbourne Recital Centre are committed to the highest standard of corporate governance and acknowledge the need for continued maintenance of governance practice and ethical conduct by all directors and employees.

Accordingly, they have ensured that systems and procedures are in place to provide appropriate assurance that the company undertakes its activities and functions in accordance with:

- all legal requirements
- the best interests of members
- an environment that meets relevant standards; and
- a manner that is responsible to all stakeholders and the wider community

## OBJECTS OF THE COMPANY

The objects of Melbourne Recital Centre include the promotion of music, by, without limitation:

- undertaking preparations for, and assisting in the funding of, the construction of Melbourne Recital Centre;
- commissioning musical performances and programming for Melbourne Recital Centre;
- promoting Melbourne Recital Centre; and
- planning and managing the operations of Melbourne Recital Centre.

## POWERS AND DUTIES OF DIRECTORS

The directors are responsible for managing the company's business and affairs and may exercise to the exclusion of the company in general meeting all the company's powers which are not required, by the *Corporations Act 2001 (Cth)* or by this constitution, to be exercised by the company in general meeting.

The Directors may decide how cheques, promissory notes, bankers drafts, bills of exchange or other negotiable instruments must be signed, drawn, accepted, endorsed or otherwise executed (as applicable) by or on behalf of the company.

The Directors may pay out of the company's funds all expenses of the promotion, formation and registration of the company and the vesting in it of the assets acquired by it.

The Directors may:

- appoint or employ a person to be an officer, agent or attorney of the company for the purposes, with the powers, discretions and duties (including powers, discretions and duties vested in or exercisable by the Directors), for the period and on the conditions they think fit;
- authorise an officer, agent or attorney to delegate all or any of the powers, discretions and duties vested in the officer, agent or attorney; and
- subject to any contract between the company and the relevant officer, agent or attorney, remove or dismiss any officer, agent or attorney at any time, with or without cause.

A power of attorney may contain any provisions for the protection and convenience of the attorney or persons dealing with the attorney that the Directors think fit.

## BOARD COMMITTEES

The Board has established a number of standing committees whose decisions become recommendations for consideration by the Board:

- Governance, Audit and Risk Committee
- Committee of Management
- Marketing and Communications Working Group
- Fundraising and Sponsorship Committee

Other established standing committees include an Occupational Health & Safety Committee, an Environmental Sustainability Committee and a Staff Consultative Committee

## COMMITTEE OF MANAGEMENT – MELBOURNE RECITAL CENTRE LAND AND BUILDING

On 23 October 2008 the Melbourne Recital Centre land at Southbank (Crown Allotment 2180, City of South Melbourne, Parish of Melbourne South) was reserved for public purposes (arts and recital centre). The Minister for Environment and Climate Change appointed Melbourne Recital Centre as the Committee of Management for that reserve with effect from that date. The Melbourne Recital Centre Committee of Management is the Board of Directors of Melbourne Recital Centre.

## FINANCIAL AND OTHER INFORMATION RETAINED BY THE ACCOUNTABLE OFFICER

Relevant information detailed in Financial Reporting Direction (FRD) 22B Standard Disclosures in the Report of Operations under the *Financial Management Act 1994* section 3 is retained by the company's Accountable Officer. The items listed below are available to the relevant ministers, Members of Parliament and the public on request (subject to the freedom of information requirements, if applicable):

- (a) details of publications produced by the MRC about the activities of the MRC and where they can be obtained;
- (b) details of changes in prices, fees, charges, rates and levies charged by the MRC for its services, including services that are administered;
- (c) details of any major external reviews carried out in respect of the operation of the MRC;
- (d) details of any other research and development activities undertaken by the MRC that are not otherwise covered either in the report of operations or in a document which contains the financial statement and report of operations;
- (e) details of overseas visits undertaken including a summary of the objectives and outcomes of each visit;
- (f) details of major promotional, public relations and marketing activities undertaken by the MRC to develop community awareness of the services provided by the MRC;
- (g) details of assessments and measures undertaken to improve the occupational health and safety of employees, not otherwise detailed in the report of operations;
- (h) a general statement on industrial relations within the MRC and details of time lost through industrial accidents and disputes, which are not otherwise detailed in the report of operations; and
- (i) a list of major committees sponsored by the MRC, the purposes of each committee and the extent to which the purposes have been achieved.

## NATIONAL COMPETITION POLICY

The company is committed to the implementation of requirements of the competitive neutrality principles and is satisfied that its activities comply with the Victorian Government's Competitive Neutrality Policy.

## IMPLEMENTATION OF THE VICTORIAN INDUSTRY PARTICIPATION POLICY

In October 2003, the Victorian Parliament passed the *Victorian Industry Participation Policy Act 2003* which required public bodies and departments to report on the implementation of the Victorian Industry Participation Policy (VIIPP). The company is required to apply the VIIPP in all tenders over \$3 million in metropolitan Melbourne and \$1 million in regional Victoria.

The company did not commence or complete any contracts during 2010/11 to which the VIIPP applies.

## WHISTLEBLOWERS PROTECTION ACT 2001

The *Whistleblowers Protection Act 2001* encourages and assists people in making disclosures of improper conduct by public officers and public bodies. The Act provides protection to people who make disclosures in accordance with the Act and establishes a system for the matters disclosed to be investigated and rectifying action to be taken.

Melbourne Recital Centre does not tolerate improper conduct by employees, or the taking of reprisals against those who come forward to disclose such conduct. It is committed to ensuring transparency and accountability in its administrative and management practices and supports the making of disclosures that reveal corrupt conduct, conduct involving a substantial mismanagement of public resources, or conduct involving a substantial risk to public health and safety or the environment.

Melbourne Recital Centre will take all reasonable steps to protect people who make such disclosures from any detrimental action in reprisal for making the disclosure. It will also afford natural justice to the person who is the subject of the disclosure to the extent it is legally possible.

## REPORTING PROCEDURES

Disclosures of improper conduct or detrimental action by Melbourne Recital Centre or its employees may be made to the following officers:

### THE PROTECTED DISCLOSURE OFFICER

Mr Peter McCoy, Director Corporate Services  
Melbourne Recital Centre  
Phone: 03 9207 2654

Alternatively, disclosures of improper conduct or detrimental action by Melbourne Recital Centre or its employees may also be made directly to the Ombudsman.

### THE OMBUDSMAN VICTORIA

Level 9, 459 Collins Street (North Tower)  
Melbourne VIC 3000  
Telephone: (03) 9613 6222  
Toll free: 1800 806 314  
Internet: [ombudsman.vic.gov.au](http://ombudsman.vic.gov.au)  
Email: [ombudvic@ombudsman.vic.gov.au](mailto:ombudvic@ombudsman.vic.gov.au)

## FURTHER INFORMATION

Written guidelines outlining the system for reporting disclosures of improper conduct or detrimental action by Melbourne Recital Centre or its employees are available on the Melbourne Recital Centre website: <http://www.melbournerecital.com.au>

## STATEMENT OF CORPORATE GOVERNANCE (CONTINUED)

THE NUMBER AND TYPES OF DISCLOSURES MADE TO PUBLIC BODIES DURING THE YEAR:	2010-2011	2009-2010
<b>Public Interest Disclosures</b>	0	0
<b>Protected Disclosures</b>	0	0
The number of disclosures referred during the year by the public body to the Ombudsman for determination as to whether they are public interest disclosures	0	0
The number and types of disclosed matters referred to the public body by the Ombudsman for investigation	0	0
The number and types of disclosures referred by the public body to the Ombudsman for investigation		0
The number and types of investigations taken over from the public body by the Ombudsman	0	0
The number of requests made by a whistleblower to the Ombudsman to take over an investigation by the public body	0	0
The number of requests made by a whistleblower to the Ombudsman to take over an investigation by the public body	0	0
The number and types of disclosed matters that the public body has declined to investigate	0	0
The number and types of disclosed matters that were substantiated upon investigation and the action taken on completion of the investigation	0	0
<b>ANY RECOMMENDATIONS MADE BY THE OMBUDSMAN THAT RELATE TO THE PUBLIC BODY:</b>		
Recommendation regarding file security and management	0	0

### ATTESTATION ON COMPLIANCE WITH THE AUSTRALIAN/NEW ZEALAND RISK MANAGEMENT STANDARD

I, Mary Vallentine certify that Melbourne Recital Centre has risk management processes in place consistent with the *Australian/New Zealand Risk Management Standard* (or equivalent designated standard) and an internal control system is in place that enables the executive to understand, manage and satisfactorily control risk exposures. The audit committee verifies this assurance and that the risk profile of Melbourne Recital Centre has been critically reviewed within the last 12 months.



**Mary Vallentine AO**  
Chief Executive Officer, Melbourne Recital Centre  
25th August 2011

### INTERNAL AUDIT

Melbourne Recital Centre is in the process of retendering for its internal auditing process which will evaluate the company's internal controls, having regard to the company's risk management program.

### EMPLOYMENT AND CONDUCT PRINCIPLES

Staff are appointed under ongoing, fixed term or casual contracts as per Melbourne Recital Centre Enterprise Agreement 2009 and are bound by the *Code of Conduct for Victorian Public Sector Employees*.

### OCCUPATIONAL HEALTH AND SAFETY POLICY

Melbourne Recital Centre has an Occupational Health and Safety Committee which has created occupational health and safety policies and procedures. During the period there were no lost work days and no assessments regarding risk management.

### DISABILITY ACTION PLAN

Melbourne Recital Centre regularly consults with Arts Access regarding any accessibility issues at the Centre if they arise. MRC's Disability Action Plan is currently under internal review. Following completion, it will be registered with the Australian Human Rights Commission, in accordance with the Disability Discrimination Act 1992. MRC is committed to making its performances, services and facilities accessible to all its visitors.

### COMPLIANCE WITH THE BUILDING ACT 1993

Pursuant to its role as Committee of Management for the Melbourne Recital Centre building, Melbourne Recital Centre complies with building and maintenance provisions of the *Building Act 1993*.

## WORKFORCE DATA STAFFING TRENDS

	2011			2010		
	ONGOING EMPLOYEES		FIXED TERM AND CASUAL EMPLOYEES	ONGOING EMPLOYEES		FIXED TERM AND CASUAL EMPLOYEES
	EMPLOYEES (headcount)	FTE	FTE	EMPLOYEES (headcount)	FTE	FTE
<b>Gender</b>						
Male	12	12	12	9	9	6
Female	20	17	6	15	15	5
<b>Total</b>	<b>32</b>	<b>29</b>	<b>18</b>	<b>24</b>	<b>24</b>	<b>11</b>
<b>Age</b>						
Under 25	1	0	6	2	2	4
25-34	17	16	7	12	12	2
35-44	7	6	2	7	7	2
45-54	4	4	1	1	1	1
55-64	3	3	1	2	2	2
Over 64	0	0	1	0	0	0
<b>Total</b>	<b>32</b>	<b>29</b>	<b>18</b>	<b>24</b>	<b>24</b>	<b>11</b>
<b>Classification</b>						
VPS 1	0	0	7	0	0	1
VPS 2	11	8	11	6	6	9
VPS 3	5	5	0	5	5	0
VPS 4	9	9	0	9	9	0
VPS 5	2	2	0	3	3	0
VPS 6	0	0	0	1	1	0
STS	0	0	0	0	0	0
Other	5	5	0	0	0	1
<b>Total</b>	<b>32</b>	<b>29</b>	<b>18</b>	<b>24</b>	<b>24</b>	<b>11</b>

### CULTURAL DIVERSITY, WOMEN, YOUNG PEOPLE AND INDIGENOUS AFFAIRS

Melbourne Recital Centre is excited by the opportunities presented by Victoria's diversity, and has a Cultural Diversity Plan which commits the organisation to celebrating other cultures. Many of our staff members speak languages other than English, and a stable gender balance is achieved through our 37 female staff and 38 male staff. When appropriate, MRC provides communications, program notes, signage and other announcements in languages other than English.

In 2010–11, MRC delivered a fabulous line up of music and performers from a broad range of cultures. Programs included international multicultural artists featuring Chucho Valdes (Cuban Jazz), Roby Lakatos (Romanian Gypsy) and Richard Bona Group (African Jazz). MRC continued its partnership with Multicultural Arts Victoria and had four Music Deli Days of local and international multicultural artists. In February 2010, MRC with Multicultural Arts and ABC Radio National's Music Deli presented an evening of contemporary Australian songs featuring indigenous performer Archie Roach.

Young people were also celebrated at MRC during 2010–11. A highlight for the year has been the Inaugural Children's Music Festival *MusicPlay*, which was held in January for 3 days. It catered for infants, toddlers, primary school age children and families and there were many free events as part of the program. It was a great

success, with sold out concerts and filled foyers. The festival featured many diverse performances, including *Carnival of the Animals* narrated by Justine Clarke, and a great interactive installation of giant red megaphones. In 2011, MRC's School Holiday Program commenced, which included popular kid's concerts such as the *Amazing Drumming Monkeys* and orchestral concerts such as *Babar the Elephant*. Another highlight for the year was a masterclass with internationally renowned pianist Lang Lang, which catered for young pianists aged 13–20 years. MRC's second annual Bach Competition (for children aged up to 17 years) and Great Romantics Competition (young artists aged between 17 years and 25 years) were also held.

### CONSULTANTS

Melbourne Recital Centre engaged 10 consultants during the period who were paid \$82,904.00

### ACCOUNTABLE OFFICER'S DECLARATION

In accordance with the *Financial Management Act 1994*, I am pleased to present Melbourne Recital Centre's Annual Report for the year ending 30 June 2011.



**Mary Vallentine AO**  
Chief Executive Officer, Melbourne Recital Centre  
25th August 2011



---

MELBOURNE RECITAL CENTRE  
31 STURT STREET, SOUTHBANK VICTORIA 3006 AUSTRALIA  
TELEPHONE +613 9699 2228 MAIL@MELBOURNERECITAL.COM.AU  
MELBOURNERECITAL.COM.AU

---

**ARTS  
VICTORIA**

